

## Recombinant Human RPE65 protein(2-533aa)

Cat. No. RPE65-7653H Lot. No. (See product label)

### SPECIFICATION

<b>Product Overview</b>	Recombinant Human RPE65 protein(Q16518)(2-533aa) was expressed in Yeast.
<b>Species</b>	Human
<b>Source</b>	Yeast
<b>ProteinLength</b>	2-533aa
<b>Form</b>	If the delivery form is liquid, the default storage buffer is Tris/PBS-based buffer, 5%-50% glycerol. If the delivery form is lyophilized powder, the buffer before lyophilization is Tris/PBS-based buffer, 6% Trehalose, pH 8.0.
<b>Molecular Mass</b>	61.5 kDa
<b>Purity</b>	Greater than 90% as determined by SDS-PAGE.
<b>Storage</b>	Store at -20°C/-80°C upon receipt, aliquoting is necessary for mutiple use. Avoid repeated freeze-thaw cycles.
<b>Reconstitution</b>	We recommend that this vial be briefly centrifuged prior to opening to bring the contents to the bottom. Please reconstitute protein in deionized sterile water to a concentration of 0.1-1.0 mg/mL. We recommend to add 5-50% of glycerol (final concentration) and aliquot for long-term storage at -20°C/-80°C.
<b>AA Sequence</b>	SIQVEHPAGGYKKLFFETVEELSSPLTAHV TGRIP LWLTG SLLRCGPGLFEV GSEPFY

 Tel: 1-631-559-9269 1-516-512-3133

 Email: [info@creative-biomart.com](mailto:info@creative-biomart.com)  Fax: 1-631-938-8127

 45-1 Ramsey Road, Shirley, NY 11967, USA

HLFDGQALLHKFDFKEGHVTYHRRFIRTDAYVRAMTEKRIVITEFGTCAFPDPCKNIF  
 SRFFSYFRGVEVTDNALVNVYPVGEDYYACTETNFITKINPETLETIKQVDLCNYVSV  
 NGATAHPHIENDGTVYNIGNCFGKFNFSIAYNIVKIPPLQADKEDPISKSEIVVQFPCSD  
 RFKPSYVHSFGLTPNYIVFVETPVKINLFKFLSSWSLWGANYMDCFESNETMGVWL  
 HIADKKRKKYLNNKYRTSPFNLFHHINTYEDNGFLIVDLCCWKGFEFVYNYLYLANLR  
 ENWEEVKKNARKAPQPEVRRYVLPLNIDKADTGKNLVTLPNTTATAILCSDETIWLEP  
 EVLFSGPRQAFEFQINQKYCGKPYTYAYGLGLNHFPDRLCKLNVKTKETWVWQ  
 EPDSYPSEPIFVSHPDAL EEDDGVVLSVVVSPGAGQKPAYLLILNAKDLSEVARAEV  
 EINIPVTFHGLFKKS

## GENE INFORMATION

**Gene Name** RPE65 retinal pigment epithelium-specific protein 65kDa [ Homo sapiens ]

**Official Symbol** RPE65

**Synonyms** RPE65; retinal pigment epithelium-specific protein 65kDa; retinal pigment epithelium specific protein (65kD) , RP20; retinoid isomerohydrolase; all trans retinyl palmitate hydrolase; LCA2; rd12; retinol isomerase; p63; RBP-binding membrane protein; all-trans-retinyl-palmitate hydrolase; retinitis pigmentosa 20 (autosomal recessive); retinal pigment epithelium-specific 65 kDa protein; RP20; mRPE65; sRPE65;

**Gene ID** 6121

**mRNA Refseq** NM\_000329

**Protein Refseq** NP\_000320

**MIM** 180069

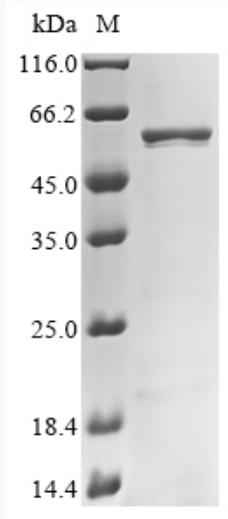
**UniProt ID** Q16518

 Tel: 1-631-559-9269 1-516-512-3133

 Email: [info@creative-biomart.com](mailto:info@creative-biomart.com)  Fax: 1-631-938-8127

 45-1 Ramsey Road, Shirley, NY 11967, USA

**SDS-PAGE**



 Tel: 1-631-559-9269 1-516-512-3133

 Email: [info@creative-biomart.com](mailto:info@creative-biomart.com)  Fax: 1-631-938-8127

 45-1 Ramsey Road, Shirley, NY 11967, USA