

Recombinant Human RPF1 Protein, GST-tagged

Cat. No. RPF1-408H **Lot. No.** (See product label)

SPECIFICATION

Product Overview	Human BXDC5 full-length ORF (NP_079341.1, 1 a.a. - 349 a.a.) recombinant protein with GST-tag at N-terminal.
Species	Human
Source	Wheat Germ
Form	50 mM Tris-HCl, 10 mM reduced Glutathione, pH=8.0 in the elution buffer.
Molecular Mass	66.5 kDa
AA Sequence	<p>MAKAGDKSGSSGKKSLKRKAAAEELQEAAAGAGDGATENGVQPPKAAAFPPGFSIS EIKNKQRRHLMFTRWKQQQRKEKLAAKKKLKKEREALGDKAPPKVPKTIQNQRVY DETTVDPNDEEVAYDEATDEFASYFNKQTSPKILITTSRPHGRTVRLCEQLSTVIPN SHVYYRRGLALKKIIPQCIARDFTDLIVINEDRKTPNGLILSHLPNGPTAHFKMSSVRL RKEIKRRGKDPTEHIPEIILNNFTTRLGHSIGRMFASLFPHPNPQFIGRQVATFHNQRD YIFFRFHRYIFRSEKKVGIQELGPRFTLKLRLSLQKGTTFDSKYGEYEWVHKPREMDTS RRKFHL</p>
Quality Control Test	12.5% SDS-PAGE Stained with Coomassie Blue.
Storage	Store at -80 centigrade. Aliquot to avoid repeated freezing and thawing.
Storage Buffer	50 mM Tris-HCl, 10 mM reduced Glutathione, pH=8.0 in the elution buffer.

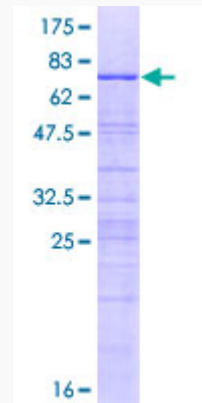
 Tel: 1-631-559-9269 1-516-512-3133

 Email: info@creative-biomart.com  Fax: 1-631-938-8127

 45-1 Ramsey Road, Shirley, NY 11967, USA

GENE INFORMATION

Gene Name	RPF1 ribosome production factor 1 homolog (<i>S. cerevisiae</i>) [<i>Homo sapiens</i>]
Official Symbol	RPF1
Synonyms	BXDC5; RP11-118B23.1
Gene ID	80135
mRNA Refseq	NM_025065.6
Protein Refseq	NP_079341.2
UniProt ID	Q9H9Y2



Tel: 1-631-559-9269 1-516-512-3133

Email: info@creative-biomart.com Fax: 1-631-938-8127

45-1 Ramsey Road, Shirley, NY 11967, USA