

Recombinant Human RPH3AL Protein (1-315 aa), His-SUMO-tagged

Cat. No. RPH3AL-1157H **Lot. No.** (See product label)

SPECIFICATION

Product Overview	Recombinant Human RPH3AL Protein (1-315 aa) is produced by E. coli expression system. This protein is fused with a 6xHis-SUMO tag at the N-terminal. Research Area: Cell Biology. Protein Description: Full Length.
Species	Human
Source	E.coli
ProteinLength	1-315 aa
Description	Rab GTPase effector involved in the late steps of regulated exocytosis, both in endocrine and exocrine cells . Acts as a potential RAB3B effector protein in epithelial cells.1 Publication.
Form	Tris-based buffer,50% glycerol
Molecular Mass	50.5 kDa
AA Sequence	MADTIFGSGNDQWVCPNDRQLALRAKLQTGWSVHTYQTEKQRRKQHLSPA EVEAI LQVIQRAERLDVLEQQRIGRLVERLETMRRNVMGNLSQCLLCGEVLGFLGSSSVF CKDCRKKVCTKCGIEASPGQKRPLWLCKICSEQREVWKRSGAWFYKGLPKYILPLK TPGRADDPHFRPLPTEPAERERPSSETSRIYTWARGRVVSSDSDSDSDLSSSSLED RLPSTGVRDRKGDKPWKESGGSVEAPRMGFTHPPGHLSGCQSSLASGETGTGSA DPPGGPRPGLTRRAPVKDTPGRAPAADAAPAGPSSCLG

 Tel: 1-631-559-9269 1-516-512-3133

 Email: info@creative-biomart.com  Fax: 1-631-938-8127

 45-1 Ramsey Road, Shirley, NY 11967, USA

Purity	> 90% as determined by SDS-PAGE.
Notes	Repeated freezing and thawing is not recommended. Store working aliquots at 4 centigrade for up to one week.
Storage	The shelf life is related to many factors, storage state, buffer ingredients, storage temperature and the stability of the protein itself. Generally, the shelf life of liquid form is 6 months at -20 centigrade/-80 centigrade. The shelf life of lyophilized form is 12 months at -20 centigrade/-80 centigrade.
Concentration	A hardcopy of COA with reconstitution instruction is sent along with the products. Please refer to it for detailed information.

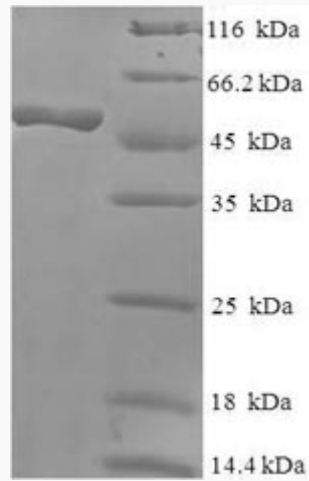
GENE INFORMATION

Gene Name	RPH3AL rabphilin 3A-like (without C2 domains) [Homo sapiens]
Official Symbol	RPH3AL
Synonyms	RPH3AL; rab effector Noc2; Noc2; NOC2;
Gene ID	9501
mRNA Refseq	NM_001190411
Protein Refseq	NP_001177340
MIM	604881
UniProt ID	Q9UNE2

 Tel: 1-631-559-9269 1-516-512-3133

 Email: info@creative-biomart.com  Fax: 1-631-938-8127

 45-1 Ramsey Road, Shirley, NY 11967, USA



(Tris-Glycine gel) Discontinuous SDS-PAGE (reduced) with 5% enrichment gel and 15% separation gel.

 Tel: 1-631-559-9269 1-516-512-3133

 Email: info@creative-biomart.com  Fax: 1-631-938-8127

 45-1 Ramsey Road, Shirley, NY 11967, USA