

## Recombinant Escherichia coli RPIA Protein (1-219 aa)

Cat. No. RPIA-2367E Lot. No. (See product label)

### SPECIFICATION

|                         |   |
|-------------------------|---|
| <b>Product Overview</b> | Recombinant Escherichia coli (strain K12) RPIA Protein (1-219 aa) is produced by Yeast expression system. Protein Description: Full Length.   |
| <b>Species</b>          | E.coli  |
| <b>Source</b>           | Yeast   |
| <b>ProteinLength</b>    | 1-219 aa  |
| <b>Description</b>      | Involved in the first step of the non-oxidative branch of the pentose phosphate pathway. It catalyzes the reversible conversion of ribose-5-phosphate to ribulose 5-phosphate. Can also act on D-ribose-5-diphosphate and D-ribose-5-triphosphate as substrate. |
| <b>Form</b>             | Tris-based buffer,50% glycerol  |
| <b>Molecular Mass</b>   | 22.9 kDa  |
| <b>AA Sequence</b>      | MTQDELKKA VGWAALQYVQPGTIVGVGTGSTAAHFIDALGTMKGQIEGAVSSSDAS<br>TEKLKSLGIHVFDLNEVDSLGIYVDGADEINGHMQMIKGGGAALTREKIIASVAEKFICI<br>ADASKQVDILGKFPLPVEVIPMARS AVARQLV KLGGRPEYRQGVVTDNGNVILDVHG<br>MEILDPIAMENAINAIPGVVTVGLFANRGADVALIGTPDGVKTIVK                      |
| <b>Purity</b>           | > 90% as determined by SDS-PAGE.  |

 Tel: 1-631-559-9269 1-516-512-3133

 Email: [info@creative-biomart.com](mailto:info@creative-biomart.com)  Fax: 1-631-938-8127

 45-1 Ramsey Road, Shirley, NY 11967, USA

|                      |   |
|----------------------|---|
| <b>Notes</b>         | Repeated freezing and thawing is not recommended. Store working aliquots at 4 centigrade for up to one week.  |
| <b>Storage</b>       | The shelf life is related to many factors, storage state, buffer ingredients, storage temperature and the stability of the protein itself. Generally, the shelf life of liquid form is 6 months at -20 centigrade/-80 centigrade. The shelf life of lyophilized form is 12 months at -20 centigrade/-80 centigrade. |
| <b>Concentration</b> | A hardcopy of COA will be sent along with the products. Please refer to it for detailed information.  |

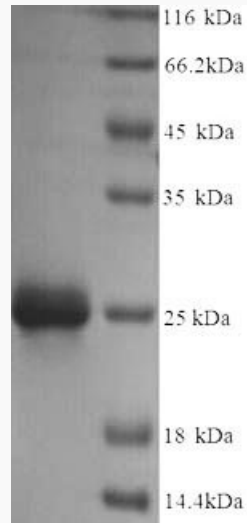
## GENE INFORMATION

|                        |   |
|------------------------|---|
| <b>Gene Name</b>       | rpiA ribose-5-phosphate isomerase A [ Escherichia coli str. K-12 substr. MG1655 ] |
| <b>Official Symbol</b> | RPIA  |
| <b>Synonyms</b>        | rpiA; ECK2910; ygfC;  |
| <b>Gene ID</b>         | 947407  |
| <b>Protein Refseq</b>  | NP_417389   |
| <b>UniProt ID</b>      | P0A7Z0  |

 Tel: 1-631-559-9269 1-516-512-3133

 Email: [info@creative-biomart.com](mailto:info@creative-biomart.com)  Fax: 1-631-938-8127

 45-1 Ramsey Road, Shirley, NY 11967, USA



(Tris-Glycine gel) Discontinuous SDS-PAGE (reduced) with 5% enrichment gel and 15% separation gel.

 Tel: 1-631-559-9269 1-516-512-3133

 Email: [info@creative-biomart.com](mailto:info@creative-biomart.com)  Fax: 1-631-938-8127

 45-1 Ramsey Road, Shirley, NY 11967, USA