

Recombinant Fruit Fly RPL10 Protein (1-218 aa), His-tagged

Cat. No. RPL10-2590F Lot. No. (See product label)

SPECIFICATION

Product Overview	Recombinant Fruit Fly (<i>Drosophila melanogaster</i>) RPL10 Protein (1-218 aa) is produced by E. coli expression system. This protein is fused with a 6xHis tag at the C-terminal. Research Area: Epigenetics and Nuclear Signaling. Protein Description: Full Length.
Species	Fruit Fly
Source	E.coli
ProteinLength	1-218 aa
Form	Tris-based buffer,50% glycerol
Molecular Mass	29.5 kDa
AA Sequence	MGRRPARCYRYCKNKPYPKSRFCRGVPDPKIRIFDLGRKKATVEDFPLCVHLVSDE YEQLSSEALEAGRICCNKYLVKYCGKDQFHIRMRLHPPFHVIRINKMLSCAGADRLQT GMRGAFGKPPQGTVARVRIGQPIMSVRSSDRYKAQVIEALRRAKFKFPGRQKIYVSK KWGFTKYERERYEELRDDNRLEPDGCNVKYRPEHGPIAAWEKAQRDVYA
Purity	> 85% as determined by SDS-PAGE.
Notes	Repeated freezing and thawing is not recommended. Store working aliquots at 4 centigrade for up to one week.

 Tel: 1-631-559-9269 1-516-512-3133

 Email: info@creative-biomart.com  Fax: 1-631-938-8127

 45-1 Ramsey Road, Shirley, NY 11967, USA

Storage The shelf life is related to many factors, storage state, buffer ingredients, storage temperature and the stability of the protein itself. Generally, the shelf life of liquid form is 6 months at -20 centigrade/-80 centigrade. The shelf life of lyophilized form is 12 months at -20 centigrade/-80 centigrade.

Concentration A hardcopy of COA will be sent along with the products. Please refer to it for detailed information.

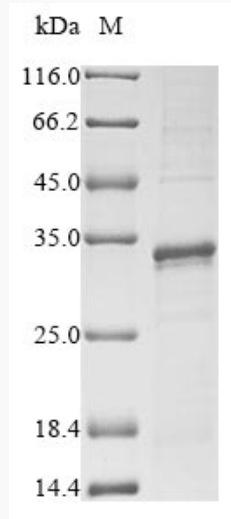
GENE INFORMATION

Gene Name	RpL10 Ribosomal protein L10 [<i>Drosophila melanogaster</i> (fruit fly)]
Official Symbol	RPL10
Synonyms	RpL10; anon-EST:Posey179; BcDNA:LD24589; CG17521; Dmel\CG17521; DQM; L10; qm; Qm; Rp L10;
Gene ID	43864
mRNA Refseq	NM_001275304
Protein Refseq	NP_001262233
UniProt ID	O61231

 Tel: 1-631-559-9269 1-516-512-3133

 Email: info@creative-biomart.com  Fax: 1-631-938-8127

 45-1 Ramsey Road, Shirley, NY 11967, USA



(Tris-Glycine gel) Discontinuous SDS-PAGE (reduced) with 5% enrichment gel and 15% separation gel.

 Tel: 1-631-559-9269 1-516-512-3133

 Email: info@creative-biomart.com  Fax: 1-631-938-8127

 45-1 Ramsey Road, Shirley, NY 11967, USA