

Recombinant Human RPL10A protein, GST-tagged

Cat. No. RPL10A-5220H Lot. No. (See product label)

SPECIFICATION

Product Overview	Recombinant Human RPL10A protein(P62906)(4-215aa), fused to N-terminal GST tag, was expressed in E. coli.
Species	Human
Source	E.coli
ProteinLength	4-215aa
Form	If the delivery form is liquid, the default storage buffer is Tris/PBS-based buffer, 5%-50% glycerol. If the delivery form is lyophilized powder, the buffer before lyophilization is Tris/PBS-based buffer, 6% Trehalose, pH 8.0.
Molecular Mass	51.2 kDa
Purity	Greater than 90% as determined by SDS-PAGE.
Storage	Store at -20°C/-80°C upon receipt, aliquoting is necessary for multiple use. Avoid repeated freeze-thaw cycles.
Reconstitution	Please reconstitute protein in deionized sterile water to a concentration of 0.1-1.0 mg/mL. We recommend to add 5-50% of glycerol (final concentration) and aliquot for long-term storage at -20°C/-80°C. Our default final concentration of glycerol is 50%.

 Tel: 1-631-559-9269 1-516-512-3133

 Email: info@creative-biomart.com  Fax: 1-631-938-8127

 45-1 Ramsey Road, Shirley, NY 11967, USA

GENE INFORMATION

Gene Name RPL10A ribosomal protein L10a [Homo sapiens]

Official Symbol RPL10A

Synonyms RPL10A; ribosomal protein L10a; NEDD6; 60S ribosomal protein L10a; Csa 19; L10A; NEDD-6; neural precursor cell expressed developmentally down-regulated protein 6; Csa-19;

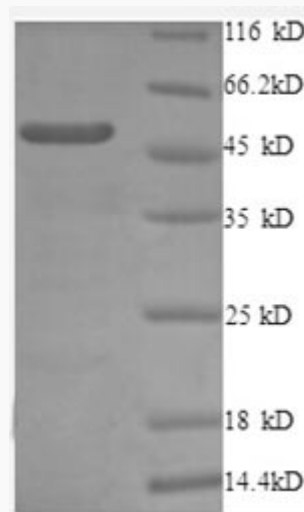
Gene ID 4736

mRNA Refseq NM_007104

Protein Refseq NP_009035

UniProt ID P62906

SDS-PAGE



 Tel: 1-631-559-9269 1-516-512-3133

 Email: info@creative-biomart.com  Fax: 1-631-938-8127

 45-1 Ramsey Road, Shirley, NY 11967, USA