

Recombinant Human RPL10A Protein (Met1-Tyr217), N-His tagged

Cat. No. RPL10A-5875H Lot. No. (See product label)

SPECIFICATION

Product Overview	Recombinant human RPL10A (Met1-Tyr217) fused with the N-His tag was expressed in E. coli.
Species	Human
Source	E.coli
ProteinLength	Met1-Tyr217
Form	Lyophilized powder/frozen liquid
Molecular Mass	27.14 kDa
Purity	> 90 % as determined by SDS-PAGE
Notes	For research use only.
Storage	Use a manual defrost freezer and avoid repeated freeze thaw cycles. Store at 2 to 8 centigrade for one week. Store at -20 to -80 centigrade for twelve months from the date of receipt.
Storage Buffer	0.01M PBS, pH 7.4, 0.02 % NLS
Reconstitution	Reconstitute in sterile water for a stock solution.

 Tel: 1-631-559-9269 1-516-512-3133

 Email: info@creative-biomart.com  Fax: 1-631-938-8127

 45-1 Ramsey Road, Shirley, NY 11967, USA

Shipping

They are shipped out with dry ice/blue ice unless customers require otherwise.

GENE INFORMATION
Gene Name

RPL10A ribosomal protein L10a [Homo sapiens (human)]

Official Symbol

RPL10A

Synonyms

RPL10A; ribosomal protein L10a; NEDD6; 60S ribosomal protein L10a; Csa 19; L10A; NEDD-6; neural precursor cell expressed developmentally down-regulated protein 6; Csa-19;

Gene ID

4736

mRNA Refseq

NM_007104

Protein Refseq

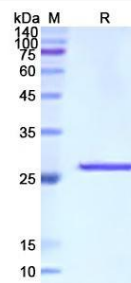
NP_009035

MIM

615660

UniProt ID

P62906

SDS-PAGE


Tel: 1-631-559-9269 1-516-512-3133

Email: info@creative-biomart.com Fax: 1-631-938-8127

45-1 Ramsey Road, Shirley, NY 11967, USA