

Recombinant Human RPL14 Protein, Myc/DDK-tagged, C13 and N15-labeled

Cat. No. RPL14-2988H **Lot. No.** (See product label)

SPECIFICATION

Product Overview	RPL14 MS Standard C13 and N15-labeled recombinant protein (NP_001030168) with a C-terminal MYC/DDK tag, was expressed in HEK293 cells.
Species	Human
Source	HEK293
Description	Ribosomes, the organelles that catalyze protein synthesis, consist of a small 40S subunit and a large 60S subunit. Together these subunits are composed of 4 RNA species and approximately 80 structurally distinct proteins. This gene encodes a ribosomal protein that is a component of the 60S subunit. The protein belongs to the L14E family of ribosomal proteins. It contains a basic region-leucine zipper (bZIP)-like domain. The protein is located in the cytoplasm. This gene contains a trinucleotide (GCT) repeat tract whose length is highly polymorphic; these triplet repeats result in a stretch of alanine residues in the encoded protein. Transcript variants utilizing alternative polyA signals and alternative 5'-terminal exons exist but all encode the same protein. As is typical for genes encoding ribosomal proteins, there are multiple processed pseudogenes of this gene dispersed through the genome.
Molecular Mass	23.6 kDa
AA Sequence	MVFRRFVEVGRVAYVSFGPHAGKLVAVDVIDQNRALVDGPCTQVRRQAMPFKCM QLTDFILKFPNSAHQKYVRQAWQKADINTKWAATRWAKKIEARERKAKMTDFDRFK

 Tel: 1-631-559-9269 1-516-512-3133

 Email: info@creative-biomart.com  Fax: 1-631-938-8127

 45-1 Ramsey Road, Shirley, NY 11967, USA

VMKAKKMRNRIIKNEVKKLQKAALLKASPCKAPGTKGTAAAAAAAAAAAAKVPACKIT
 AASKKAPAQKVPAQKATGQKAAPAPKAQKGQKAPAQKAPAPKASGKKATRTRPLE
 QKLISEEDLAANDILDYKDDDDKV

Purity > 80% as determined by SDS-PAGE and Coomassie blue staining

Stability Stable for 3 months from receipt of products under proper storage and handling conditions.

Storage Store at -80 centigrade. Avoid repeated freeze-thaw cycles.

Concentration 50 µg/mL as determined by BCA

Storage Buffer 100 mM glycine, 25 mM Tris-HCl, pH 7.3.

GENE INFORMATION

Gene Name [RPL14 ribosomal protein L14 \[Homo sapiens \(human\) \]](#)

Official Symbol [RPL14](#)

Synonyms RPL14; ribosomal protein L14; 60S ribosomal protein L14; CAG ISL 7; CTG B33; hRL14; L14; RL14; CTG-B33; CAG-ISL-7; MGC88594;

Gene ID [9045](#)

mRNA Refseq [NM_001034996](#)

Protein Refseq [NP_001030168](#)

MIM [617414](#)

 Tel: 1-631-559-9269 1-516-512-3133

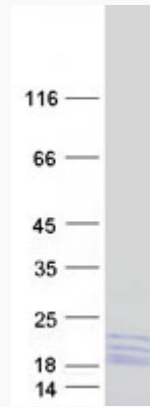
 Email: info@creative-biomart.com  Fax: 1-631-938-8127

 45-1 Ramsey Road, Shirley, NY 11967, USA

UniProt ID

P50914

SDS-PAGE



 Tel: 1-631-559-9269 1-516-512-3133

 Email: info@creative-biomart.com  Fax: 1-631-938-8127

 45-1 Ramsey Road, Shirley, NY 11967, USA