

Recombinant Human RPL18 Protein, Myc/DDK-tagged, C13 and N15-labeled

Cat. No. RPL18-5552H **Lot. No.** (See product label)

SPECIFICATION

Product Overview	RPL18 MS Standard C13 and N15-labeled recombinant protein (NP_000970) with a C-terminal MYC/DDK tag, was expressed in HEK293 cells.
Species	Human
Source	HEK293
Description	Ribosomes, the organelles that catalyze protein synthesis, consist of a small 40S subunit and a large 60S subunit. Together these subunits are composed of 4 RNA species and approximately 80 structurally distinct proteins. This gene encodes a member of the L18E family of ribosomal proteins that is a component of the 60S subunit. As is typical for genes encoding ribosomal proteins, there are multiple processed pseudogenes of this gene dispersed through the genome. Alternatively spliced transcript variants encoding multiple isoforms have been observed for this gene.
Molecular Mass	21.7 kDa
AA Sequence	MGVDIRHNKDRKVRKPKSQDIYLRLLVKLYRFLARRTNSTFNQVVLKRLFMSRTN RPPLCLSRMIRKMKLPGRENKTAVVVGTITDDVRVQEVPKLKVCALRVTSRARSRL RAGGKILTFDQLALDSPKGCQTVLLSGPRKGREVYRHFHGKAPGTPHSHTKPYVRSK GRKFERARGRRASRGYKNTRTRPLEQKLISEEDLAANDILDYKDDDDKV
Purity	> 80% as determined by SDS-PAGE and Coomassie blue staining

 Tel: 1-631-559-9269 1-516-512-3133

 Email: info@creative-biomart.com  Fax: 1-631-938-8127

 45-1 Ramsey Road, Shirley, NY 11967, USA

Stability	Stable for 3 months from receipt of products under proper storage and handling conditions.
Storage	Store at -80 centigrade. Avoid repeated freeze-thaw cycles.
Concentration	50 µg/mL as determined by BCA
Storage Buffer	100 mM glycine, 25 mM Tris-HCl, pH 7.3.

GENE INFORMATION

Gene Name	RPL18 ribosomal protein L18 [Homo sapiens (human)]
Official Symbol	RPL18
Synonyms	RPL18; ribosomal protein L18; 60S ribosomal protein L18; L18;
Gene ID	6141
mRNA Refseq	NM_000979
Protein Refseq	NP_000970
MIM	604179
UniProt ID	Q07020

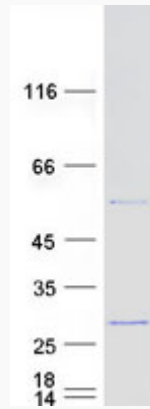
 Tel: 1-631-559-9269 1-516-512-3133

 Email: info@creative-biomart.com  Fax: 1-631-938-8127

 45-1 Ramsey Road, Shirley, NY 11967, USA



SDS-PAGE



Tel: 1-631-559-9269 1-516-512-3133

Email: info@creative-biomart.com Fax: 1-631-938-8127

45-1 Ramsey Road, Shirley, NY 11967, USA