

# Recombinant Human RPL19 Protein, MYC/DDK-tagged, C13 and N15-labeled

**Cat. No.** RPL19-227H    **Lot. No.** (See product label)

## SPECIFICATION

<b>Product Overview</b>	RPL19 MS Standard C13 and N15-labeled recombinant protein (NP_000972) with a C-terminal MYC/DDK tag, was expressed in HEK293 cells.
<b>Species</b>	Human
<b>Source</b>	HEK293
<b>Description</b>	Ribosomes, the organelles that catalyze protein synthesis, consist of a small 40S subunit and a large 60S subunit. Together these subunits are composed of 4 RNA species and approximately 80 structurally distinct proteins. This gene encodes a ribosomal protein that is a component of the 60S subunit. The protein belongs to the L19E family of ribosomal proteins. It is located in the cytoplasm. As is typical for genes encoding ribosomal proteins, there are multiple processed pseudogenes of this gene dispersed through the genome. [provided by RefSeq, Jul 2008]
<b>Molecular Mass</b>	23.3 kDa
<b>AA Sequence</b>	MSMLRLQKRLASSVLRGKKKVWLPNETNEIANANSRQQIRKLIKDGLIIRKPVTVH SRARCRKNTLARRKGRHMGIGKRKGTANARMPEKVTWMRRMRILRLLRRYRESK KIDRHMYSLSYLKVKGNVFNKRILMEHIHKLKADKARKLLADQAEARRSKTKEAR KRREERLQAKKEEIIKTLKKEETKTRTRPLEQKLISEEDLAANDILDYKDDDDKV
<b>Purity</b>	> 80% as determined by SDS-PAGE and Coomassie blue staining

 Tel: 1-631-559-9269    1-516-512-3133

 Email: [info@creative-biomart.com](mailto:info@creative-biomart.com)     Fax: 1-631-938-8127

 45-1 Ramsey Road, Shirley, NY 11967, USA

<b>Stability</b>	Stable for 3 months from receipt of products under proper storage and handling conditions.
<b>Storage</b>	Store at -80 centigrade. Avoid repeated freeze-thaw cycles.
<b>Concentration</b>	50 µg/mL as determined by BCA
<b>Storage Buffer</b>	100 mM glycine, 25 mM Tris-HCl, pH 7.3.
<b>GENE INFORMATION</b>	
<b>Gene Name</b>	RPL19 ribosomal protein L19 [ Homo sapiens (human) ]
<b>Official Symbol</b>	RPL19
<b>Synonyms</b>	RPL19; ribosomal protein L19; 60S ribosomal protein L19; DKFZp779D216; FLJ27452; L19; MGC71997; cytosolic; N terminus truncated;
<b>Gene ID</b>	6143
<b>mRNA Refseq</b>	NM_000981
<b>Protein Refseq</b>	NP_000972
<b>MIM</b>	180466
<b>UniProt ID</b>	P84098

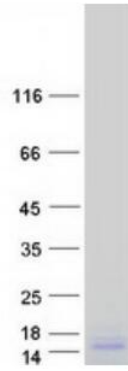
 Tel: 1-631-559-9269 1-516-512-3133

 Email: [info@creative-biomart.com](mailto:info@creative-biomart.com)  Fax: 1-631-938-8127

 45-1 Ramsey Road, Shirley, NY 11967, USA



**SDS-PAGE**



Tel: 1-631-559-9269 1-516-512-3133

Email: [info@creative-biomart.com](mailto:info@creative-biomart.com) Fax: 1-631-938-8127

45-1 Ramsey Road, Shirley, NY 11967, USA