

Recombinant Human RPL23 protein, His-tagged

Cat. No. RPL23-2383H Lot. No. (See product label)

SPECIFICATION

Product Overview	Recombinant Human RPL23 protein(1-140 aa), fused with N-terminal His tag, was expressed in E. coli.
Species	Human
Source	E.coli
ProteinLength	1-140 aa
Tag	N-His
Form	The purified protein was Lyophilized from sterile PBS (58mM Na ₂ HPO ₄ , 17mM NaH ₂ PO ₄ , 68mM NaCl, pH7.4). 5 % trehalose and 5 % mannitol are added as protectant before lyophilization.
Purity	95%, by SDS-PAGE with Coomassie Brilliant Blue staining.
Storage	Short-term storage: Store at 2-8°C for (1-2 weeks). Long-term storage: Aliquot and store at -20°C to -80°C for up to 3 months, reconstitution with sterile water and addition of an equal volume of glycerol. Avoid repeat freeze-thaw cycles.
Reconstitution	Reconstitute at 0.25 µg/µl in 200 µl sterile water for short-term storage. After reconstitution with sterile water, if glycerol has no effect on subsequent experiments, it is recommended to add an equal volume of glycerol for long-term storage.

 Tel: 1-631-559-9269 1-516-512-3133

 Email: info@creative-biomart.com  Fax: 1-631-938-8127

 45-1 Ramsey Road, Shirley, NY 11967, USA

AA Sequence MSKRGRGGSSGAKFRISLGLPVGAVINCADNTGAKNLYIISVKGIGRLNRLPAAGV
GDMVMATVKKKGPELRKKVHPAVVIRQRKSYRRKDGVFLYFEDNAGVIVNNKGEMK
GSAITGPVAKECADLWPRIASNAGSIA

GENE INFORMATION

Gene Name [RPL23 ribosomal protein L23 \[Homo sapiens \]](#)

Official Symbol [RPL23](#)

Synonyms RPL23; ribosomal protein L23; 60S ribosomal protein L23; L23; rpL17; ribosomal protein L17; 60S ribosomal protein L17; MGC72008; MGC111167; MGC117346;

Gene ID [9349](#)

mRNA Refseq [NM_000978](#)

Protein Refseq [NP_000969](#)

MIM [603662](#)

UniProt ID [P62829](#)

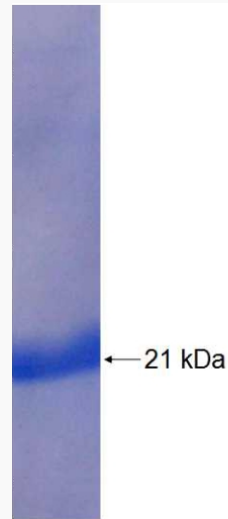
 Tel: 1-631-559-9269 1-516-512-3133

 Email: info@creative-biomart.com  Fax: 1-631-938-8127

 45-1 Ramsey Road, Shirley, NY 11967, USA



SDS-PAGE



Tel: 1-631-559-9269 1-516-512-3133

Email: info@creative-biomart.com Fax: 1-631-938-8127

45-1 Ramsey Road, Shirley, NY 11967, USA