

Recombinant Human RPL3 protein, GST-tagged

Cat. No. RPL3-5178H Lot. No. (See product label)

SPECIFICATION

Product Overview	Recombinant Human RPL3 protein(P39023)(2-247aa), fused to N-terminal GST tag, was expressed in E. coli.
Species	Human
Source	E.coli
ProteinLength	2-247aa
Form	If the delivery form is liquid, the default storage buffer is Tris/PBS-based buffer, 5%-50% glycerol. If the delivery form is lyophilized powder, the buffer before lyophilization is Tris/PBS-based buffer, 6% Trehalose, pH 8.0.
Molecular Mass	55.4 kDa
Purity	Greater than 90% as determined by SDS-PAGE.
Storage	Store at -20°C/-80°C upon receipt, aliquoting is necessary for multiple use. Avoid repeated freeze-thaw cycles.
Reconstitution	Please reconstitute protein in deionized sterile water to a concentration of 0.1-1.0 mg/mL. We recommend to add 5-50% of glycerol (final concentration) and aliquot for long-term storage at -20°C/-80°C. Our default final concentration of glycerol is 50%.

 Tel: 1-631-559-9269 1-516-512-3133

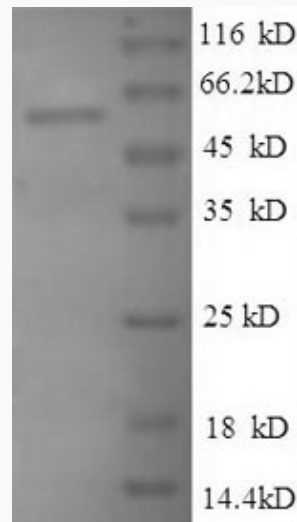
 Email: info@creative-biomart.com  Fax: 1-631-938-8127

 45-1 Ramsey Road, Shirley, NY 11967, USA

GENE INFORMATION

Gene Name	RPL3 ribosomal protein L3 [Homo sapiens]
Official Symbol	RPL3
Synonyms	RPL3; ribosomal protein L3; 60S ribosomal protein L3; L3; HIV-1 TAR RNA-binding protein B; ribosomal protein L3, isoform a; TARBP-B; MGC104284;
Gene ID	6122
mRNA Refseq	NM_000967
Protein Refseq	NP_000958
MIM	604163
UniProt ID	P39023

SDS-PAGE



 Tel: 1-631-559-9269 1-516-512-3133

 Email: info@creative-biomart.com  Fax: 1-631-938-8127

 45-1 Ramsey Road, Shirley, NY 11967, USA