

Recombinant Human RPL35A Protein (1-110 aa), His-SUMO-tagged

Cat. No. RPL35A-783H **Lot. No.** (See product label)

SPECIFICATION

Product Overview	Recombinant Human RPL35A Protein (1-110 aa) is produced by E. coli expression system. This protein is fused with a 6xHis-SUMO tag at the N-terminal. Research Area: Epigenetics and Nuclear Signaling. Protein Description: Full Length.
Species	Human
Source	E.coli
ProteinLength	1-110 aa
Description	Required for the proliferation and viability of hatopoietic cells. Plays a role in 60S ribosomal subunit formation. The protein was found to bind to both initiator and elongator tRNAs and consequently was assigned to the P site or P and A site.
Form	Tris-based buffer, 50% glycerol
Molecular Mass	28.5 kDa
AA Sequence	MSGRLWSKAIFAGYKRGLRNQREHTALLKIEGVYARDETEFYLGKRCAYVYKAKNN TVTPGGKPNKTRVIWGKVTRAHGNSGMVRAKFRSNLPAKAIGHRIRVMLYPSRI
Purity	> 90% as determined by SDS-PAGE.
Notes	Repeated freezing and thawing is not recommended. Store working aliquots at 4

 Tel: 1-631-559-9269 1-516-512-3133

 Email: info@creative-biomart.com  Fax: 1-631-938-8127

 45-1 Ramsey Road, Shirley, NY 11967, USA

centigrade for up to one week.

Storage

The shelf life is related to many factors, storage state, buffer ingredients, storage temperature and the stability of the protein itself. Generally, the shelf life of liquid form is 6 months at -20 centigrade/-80 centigrade. The shelf life of lyophilized form is 12 months at -20 centigrade/-80 centigrade.

Concentration

A hardcopy of COA with concentration instruction is sent along with the products.

GENE INFORMATION

Gene Name

RPL35A ribosomal protein L35a [Homo sapiens (human)]

Official Symbol

RPL35A

Synonyms

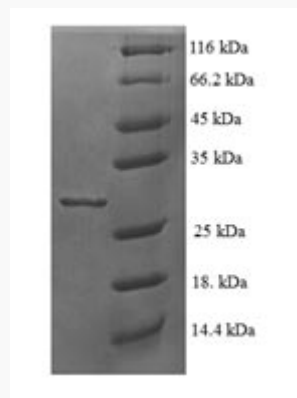
DBA5; L35A; eL33;

Gene ID

6165

UniProt ID

P18077



 Tel: 1-631-559-9269 1-516-512-3133

 Email: info@creative-biomart.com  Fax: 1-631-938-8127

 45-1 Ramsey Road, Shirley, NY 11967, USA



(Tris-Glycine gel) Discontinuous SDS-PAGE (reduced) with 5% enrichment gel and 15% separation gel.

 Tel: 1-631-559-9269 1-516-512-3133

 Email: info@creative-biomart.com  Fax: 1-631-938-8127

 45-1 Ramsey Road, Shirley, NY 11967, USA