

# Recombinant Human RPL7L1 Protein, Myc/DDK-tagged, C13 and N15-labeled

**Cat. No.** RPL7L1-4305H    **Lot. No.** (See product label)

## SPECIFICATION

<b>Product Overview</b>	RPL7L1 MS Standard C13 and N15-labeled recombinant protein (NP_940888) with a C-terminal MYC/DDK tag, was expressed in HEK293 cells.
<b>Species</b>	Human
<b>Source</b>	HEK293
<b>Description</b>	RPL7L1 (Ribosomal Protein L7 Like 1) is a Protein Coding gene. Diseases associated with RPL7L1 include Charcot-Marie-Tooth Disease, Axonal, Type 2N. An important paralog of this gene is RPL7.
<b>Molecular Mass</b>	28.7 kDa
<b>AA Sequence</b>	MAEQEQRKIPLVPENLLKKRKAYQALKATQAKQALLAKKEQKKGKGLRFKRLESFLH DSWRQKRDKVRLRRLEVKPHALELPDKHSLAFVVRIERIDGVSLLVQRTIARLRLKKI FSGVFKVTPQNLKMLRIVEPYVTWGFNPKSVRELILKRGQAKVKNKTIPLTDNTVI EEHLGKFGVICLEDLIHEIAFPGKHFQEISWFLCPFHLSVARHATKNRVGFLKEMGTP GYRGERINQLIRQLNTRTRPLEQKLISEEDLAANDILDYKDDDDKV
<b>Purity</b>	> 80% as determined by SDS-PAGE and Coomassie blue staining
<b>Stability</b>	Stable for 3 months from receipt of products under proper storage and handling conditions.

 Tel: 1-631-559-9269    1-516-512-3133

 Email: [info@creative-biomart.com](mailto:info@creative-biomart.com)     Fax: 1-631-938-8127

 45-1 Ramsey Road, Shirley, NY 11967, USA

<b>Storage</b>	Store at -80 centigrade. Avoid repeated freeze-thaw cycles.
<b>Concentration</b>	50 µg/mL as determined by BCA
<b>Storage Buffer</b>	100 mM glycine, 25 mM Tris-HCl, pH 7.3.

## GENE INFORMATION

<b>Gene Name</b>	RPL7L1 ribosomal protein L7-like 1 [ Homo sapiens (human) ]
<b>Official Symbol</b>	RPL7L1
<b>Synonyms</b>	RPL7L1; ribosomal protein L7 like 1; dJ475N16.4; 60S ribosomal protein L7-like 1; large ribosomal subunit protein uL30-like 1
<b>Gene ID</b>	285855
<b>mRNA Refseq</b>	NM_198486
<b>Protein Refseq</b>	NP_940888
<b>MIM</b>	617417
<b>UniProt ID</b>	Q6DKI1

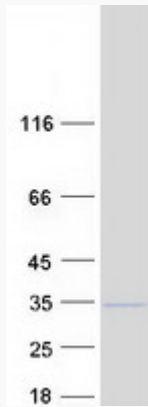
 Tel: 1-631-559-9269 1-516-512-3133

 Email: [info@creative-biomart.com](mailto:info@creative-biomart.com)  Fax: 1-631-938-8127

 45-1 Ramsey Road, Shirley, NY 11967, USA



SDS-PAGE



Tel: 1-631-559-9269 1-516-512-3133

Email: [info@creative-biomart.com](mailto:info@creative-biomart.com) Fax: 1-631-938-8127

45-1 Ramsey Road, Shirley, NY 11967, USA