

Recombinant Human RPL8 Protein, Myc/DDK-tagged, C13 and N15-labeled

Cat. No. RPL8-5480H **Lot. No.** (See product label)

SPECIFICATION

Product Overview	RPL8 MS Standard C13 and N15-labeled recombinant protein (NP_150644) with a C-terminal MYC/DDK tag, was expressed in HEK293 cells.
Species	Human
Source	HEK293
Description	Ribosomes, the organelles that catalyze protein synthesis, consist of a small 40S subunit and a large 60S subunit. Together these subunits are composed of 4 RNA species and approximately 80 structurally distinct proteins. This gene encodes a ribosomal protein that is a component of the 60S subunit. The protein belongs to the L2P family of ribosomal proteins. It is located in the cytoplasm. In rat, the protein associates with the 5.8S rRNA, very likely participates in the binding of aminoacyl-tRNA, and is a constituent of the elongation factor 2-binding site at the ribosomal subunit interface. Alternatively spliced transcript variants encoding the same protein exist. As is typical for genes encoding ribosomal proteins, there are multiple processed pseudogenes of this gene dispersed through the genome.
Molecular Mass	28 kDa
AA Sequence	MGRVIRGQRKGAGSVFRAHVKHRKGAARLRAVDFAERHGYIKGIVKDIHDPGRGAP LAKVVFRDPYRFKKRTELFAAEGIHTGQFVYCGKKAQLNVGNVLPVGTMPEGTIVC CLEEKPGDRGKLARASGNYATVISHNPETKKTRVKLPSGSKKVISSANRAVVGVVAG

 Tel: 1-631-559-9269 1-516-512-3133

 Email: info@creative-biomart.com  Fax: 1-631-938-8127

 45-1 Ramsey Road, Shirley, NY 11967, USA

GGRIDKPILKAGRAYHKYKAKRNCWPRVRGVAMNPVEHPFGGGNHQHIGKPSTIRR
 DAPAGRKVGLIAARRTGRLRGTKTVQEKENRTRTRPLEQKLISEEDLAANDILDYKDD
 DDKV

Purity > 80% as determined by SDS-PAGE and Coomassie blue staining

Stability Stable for 3 months from receipt of products under proper storage and handling conditions.

Storage Store at -80 centigrade. Avoid repeated freeze-thaw cycles.

Concentration 50 µg/mL as determined by BCA

Storage Buffer 100 mM glycine, 25 mM Tris-HCl, pH 7.3.

GENE INFORMATION

Gene Name [RPL8 ribosomal protein L8 \[Homo sapiens \(human\) \]](#)

Official Symbol [RPL8](#)

Synonyms RPL8; ribosomal protein L8; 60S ribosomal protein L8; L8;

Gene ID [6132](#)

mRNA Refseq [NM_033301](#)

Protein Refseq [NP_150644](#)

MIM [604177](#)

 Tel: 1-631-559-9269 1-516-512-3133

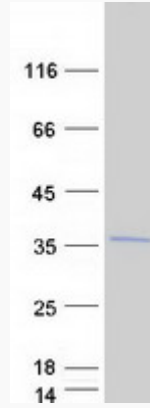
 Email: info@creative-biomart.com  Fax: 1-631-938-8127

 45-1 Ramsey Road, Shirley, NY 11967, USA

UniProt ID

P62917

SDS-PAGE



 Tel: 1-631-559-9269 1-516-512-3133

 Email: info@creative-biomart.com  Fax: 1-631-938-8127

 45-1 Ramsey Road, Shirley, NY 11967, USA