

## Recombinant Human RPLP0 protein(11-310 aa), C-His-tagged

Cat. No. RPLP0-2559H Lot. No. (See product label)

### SPECIFICATION

<b>Product Overview</b>	Recombinant Human RPLP0 protein(P05388)(11-310 aa), fused with C-terminal His tag, was expressed in E. coli.
<b>Species</b>	Human
<b>Source</b>	E.coli
<b>ProteinLength</b>	11-310 aa
<b>Form</b>	0.15 M Phosphate buffered saline
<b>Molecular Mass</b>	34.5 kDa
<b>Storage</b>	Shipped on dry ice. Avoid repeated freeze-thaw cycles. Upon receipt, 2 days when stored at 2 to 8 °C after thawing. Up to 12 months when aliquoted and stored at -20 to -80°C.
<b>Reconstitution</b>	It is recommended that sterile water be added to the vial to prepare a stock solution of 0.2 ug/ul. Centrifuge the vial at 4°C before opening to recover the entire contents.
<b>AA Sequence</b>	SNYFLKIIQLLDDYPKCFIVGADNVGSKQMQQIRMSLRGKAVVLMGKNTMMRKAIRG HLENNPALEKLLPHIRGNVGFVFTKEDLTEIRDMLLANKVPAAARAGAIAPCEVTVPA QNTGLGPEKTSFFQALGITTKISRGTIEILSDVQLIKTGDKVGASEATLLNMLNISPFSS GLVIQQVFDNGSIYNPEVLDITEETLHSRFLGVRNVASVCLQIGYPTVASVPHSIING YKRVLALSVETDYTFPLAEKVKAFLADPSAFVAAAPVAAATTAAPAAAAAPAKVEAK

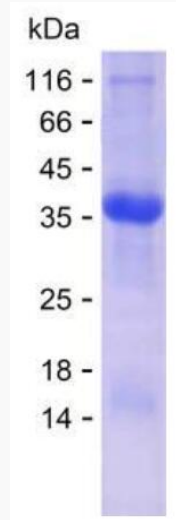
 Tel: 1-631-559-9269 1-516-512-3133

 Email: [info@creative-biomart.com](mailto:info@creative-biomart.com)  Fax: 1-631-938-8127

 45-1 Ramsey Road, Shirley, NY 11967, USA


EESEESDED

SDS-PAGE



 Tel: 1-631-559-9269 1-516-512-3133

 Email: [info@creative-biomart.com](mailto:info@creative-biomart.com)  Fax: 1-631-938-8127

 45-1 Ramsey Road, Shirley, NY 11967, USA