

Recombinant Human RPLP2 protein, GST-tagged

Cat. No. RPLP2-5177H Lot. No. (See product label)

SPECIFICATION

Product Overview	Recombinant Human RPLP2 protein(P05387)(1-113aa), fused to N-terminal GST tag, was expressed in E. coli.
Species	Human
Source	E.coli
ProteinLength	1-113aa
Form	If the delivery form is liquid, the default storage buffer is Tris/PBS-based buffer, 5%-50% glycerol. If the delivery form is lyophilized powder, the buffer before lyophilization is Tris/PBS-based buffer, 6% Trehalose, pH 8.0.
Molecular Mass	38.4 kDa
Purity	Greater than 90% as determined by SDS-PAGE.
Storage	Store at -20°C/-80°C upon receipt, aliquoting is necessary for multiple use. Avoid repeated freeze-thaw cycles.
Reconstitution	Please reconstitute protein in deionized sterile water to a concentration of 0.1-1.0 mg/mL. We recommend to add 5-50% of glycerol (final concentration) and aliquot for long-term storage at -20°C/-80°C. Our default final concentration of glycerol is 50%.

 Tel: 1-631-559-9269 1-516-512-3133

 Email: info@creative-biomart.com  Fax: 1-631-938-8127

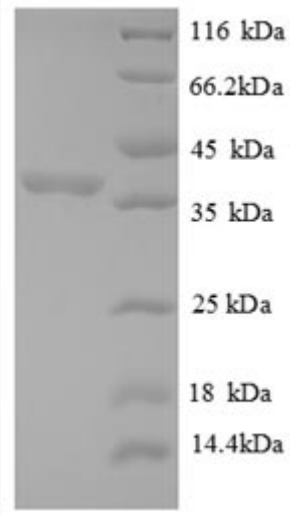
 45-1 Ramsey Road, Shirley, NY 11967, USA

GENE INFORMATION

Gene Name	RPLP2 ribosomal protein, large, P2 [Homo sapiens]
Official Symbol	RPLP2
Synonyms	RPLP2; ribosomal protein, large, P2; D11S2243E; 60S acidic ribosomal protein P2; acidic ribosomal phosphoprotein P2; LP2; MGC71408; P2; RPP2; renal carcinoma antigen NY-REN-44;
Gene ID	6181
mRNA Refseq	NM_001004
Protein Refseq	NP_000995
MIM	180530
UniProt ID	P05387

 Tel: 1-631-559-9269 1-516-512-3133 Email: info@creative-biomart.com  Fax: 1-631-938-8127 45-1 Ramsey Road, Shirley, NY 11967, USA

SDS-PAGE



 Tel: 1-631-559-9269 1-516-512-3133

 Email: info@creative-biomart.com  Fax: 1-631-938-8127

 45-1 Ramsey Road, Shirley, NY 11967, USA