

Recombinant Human RPP25 Protein (Met1-Ala199), N-His tagged

Cat. No. RPP25-5952H Lot. No. (See product label)

SPECIFICATION

Product Overview	Recombinant human RPP25 (Met1-Ala199) fused with the N-terminal His tag was expressed in E. coli.
Species	Human
Source	E.coli
ProteinLength	Met1-Ala199
Form	Lyophilized powder/frozen liquid
Molecular Mass	21.86 kDa
Purity	> 90 % as determined by SDS-PAGE
Notes	For research use only.
Storage	Use a manual defrost freezer and avoid repeated freeze thaw cycles. Store at 2 to 8 centigrade for one week. Store at -20 to -80 centigrade for twelve months from the date of receipt.
Storage Buffer	Lyophilized from PBS, pH 7.4, 1 mM EDTA, 4 % trehalose, 1 % mannitol.
Reconstitution	Reconstitute in sterile water for a stock solution.

 Tel: 1-631-559-9269 1-516-512-3133

 Email: info@creative-biomart.com  Fax: 1-631-938-8127

 45-1 Ramsey Road, Shirley, NY 11967, USA

Shipping They are shipped out with dry ice/blue ice unless customers require otherwise.

GENE INFORMATION

Gene Name RPP25 ribonuclease P/MRP 25kDa subunit [Homo sapiens (human)]

Official Symbol RPP25

Synonyms RPP25; ribonuclease P/MRP 25kDa subunit

Gene ID 54913

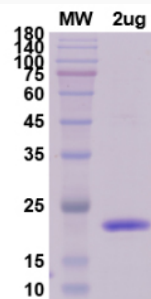
mRNA Refseq NM_017793

Protein Refseq NP_060263

MIM 619235

UniProt ID Q9BUL9

SDS-PAGE



 Tel: 1-631-559-9269 1-516-512-3133

 Email: info@creative-biomart.com  Fax: 1-631-938-8127

 45-1 Ramsey Road, Shirley, NY 11967, USA