

Recombinant Full Length Human RPP25 Protein, C-Flag-tagged

Cat. No. RPP25-632HFL **Lot. No.** (See product label)

SPECIFICATION

Product Overview	Recombinant Full Length Human RPP25 Protein, fused to Flag-tag at C-terminus, was expressed in Mammalian cells.
Species	Human
Source	Mammalian Cells
Description	Enables ribonuclease P RNA binding activity. Contributes to ribonuclease P activity. Involved in tRNA 5'-leader removal. Located in centriolar satellite and nucleoplasm. Part of multimeric ribonuclease P complex and ribonuclease MRP complex. Biomarker of autistic disorder.
Form	25 mM Tris HCl, pH 7.3, 100 mM glycine, 10% glycerol.
Molecular Mass	20.5 kDa
AA Sequence	MENFRKVRSEEAPAGCGAEGGGPGSGPFADLAPGAVHMRVKEGSKIRNLMAFATA SMAQPATRAIVFSGC GRATTKVTVCAEILKRRLAGLHQVTRLRYSVREVWQSLPP GPTQGQTPGEPAAASLSVLKNVPGLAILLS KDALDPRQPGYQPPNPHPGPSSPPAAPASKRSLGEPAAAGEGSAKRSQPEPGVADE DQTATRTRPLEQKLISEEDLAANDILDYKDDDDKV
Purity	> 80% as determined by SDS-PAGE and Coomassie blue staining.

 Tel: 1-631-559-9269 1-516-512-3133

 Email: info@creative-biomart.com  Fax: 1-631-938-8127

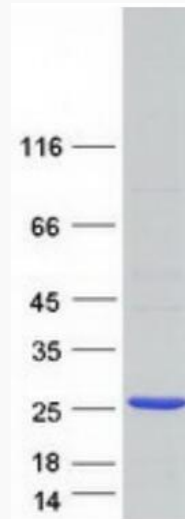
 45-1 Ramsey Road, Shirley, NY 11967, USA

Stability	Stable for 12 months from the date of receipt of the product under proper storage and handling conditions. Avoid repeated freeze-thaw cycles.
Storage	Store at -80 centigrade.
Concentration	>50 ug/mL as determined by microplate BCA method.
Preparation	Recombinant protein was captured through anti-DDK affinity column followed by conventional chromatography steps.
Full Length	Full L.
GENE INFORMATION	
Gene Name	RPP25 ribonuclease P and MRP subunit p25 [Homo sapiens (human)]
Official Symbol	RPP25
Synonyms	FLJ20374
Gene ID	54913
mRNA Refseq	NM_017793.3
Protein Refseq	NP_060263.2
MIM	619235
UniProt ID	Q9BUL9

 Tel: 1-631-559-9269 1-516-512-3133

 Email: info@creative-biomart.com  Fax: 1-631-938-8127

 45-1 Ramsey Road, Shirley, NY 11967, USA



Coomassie blue staining of purified RPP25 protein.

Tel: 1-631-559-9269 1-516-512-3133

Email: info@creative-biomart.com Fax: 1-631-938-8127

45-1 Ramsey Road, Shirley, NY 11967, USA