

## Active Recombinant Human RPP40 protein, His-tagged

Cat. No. RPP40-2663H Lot. No. (See product label)

### SPECIFICATION

<b>Product Overview</b>	Active Recombinant Human RPP40 protein(O75818)(49~258 aa), fused with N-terminal His tag, was expressed in E.coli.
<b>Species</b>	Human
<b>Source</b>	E.coli
<b>ProteinLength</b>	49-258 aa
<b>Form</b>	Lyophilized from sterile 20mM Tris, 150mM NaCl, pH8.0, containing 1mM EDTA, 1mM DTT, 0.01% SKL, 5% Trehalose and Proclin300.
<b>Bio-activity</b>	Ribonuclease P (RNASEP) is a type of ribonuclease which cleaves RNA. RNase P is unique from other RNases in that it is a ribozyme – a ribonucleic acid that acts as a catalyst in the same way that a protein based enzyme would. Its function is to cleave off an extra, or precursor, sequence of RNA on tRNA molecules. Besides, Methyl CpG Binding Protein 2 (MECP2) has been identified as an interactor of RNASEP, thus a binding ELISA assay was conducted to detect the interaction of recombinant human RNASEP and recombinant human MECP2. Briefly, RNASEP were diluted serially in PBS, with 0.01% BSA (pH 7.4). Duplicate samples of 100µL were then transferred to MECP2-coated microtiter wells and incubated for 2h at 37°C. Wells were washed with PBST and incubated for 1h with anti-RNASEP pAb, then aspirated and washed 3 times. After incubation with HRP labelled secondary antibody, wells were aspirated and washed 3 times. With the addition of substrate solution, wells

 Tel: 1-631-559-9269 1-516-512-3133

 Email: [info@creative-biomart.com](mailto:info@creative-biomart.com)  Fax: 1-631-938-8127

 45-1 Ramsey Road, Shirley, NY 11967, USA

were incubated 15-25 minutes at 37°C. Finally, add 50µ stop solution to the wells and read at 450nm immediately. The binding activity of RNASEP and MECP2 was shown, and this effect was in a dose dependent manner.

<b>Molecular Mass</b>	27.7kDa
<b>Endotoxin</b>	<1.0EU per 1µg (determined by the LAL method).
<b>Purity</b>	> 90% as determined by SDS-PAGE.
<b>Storage</b>	Avoid repeated freeze/thaw cycles. Store at -20°C for 12 months. Aliquot and store at -80°C for 12 months.
<b>Reconstitution</b>	Reconstitute in 20mM Tris, 150mM NaCl (pH8.0) to a concentration of 0.1-1.0 mg/mL. Do not vortex.

## GENE INFORMATION

<b>Gene Name</b>	RPP40 ribonuclease P/MRP 40kDa subunit [ Homo sapiens ]
<b>Official Symbol</b>	RPP40
<b>Synonyms</b>	RPP40; ribonuclease P/MRP 40kDa subunit; ribonuclease P 40kDa subunit, ribonuclease P1, RNASEP1; ribonuclease P protein subunit p40; bA428J1.3; ribonuclease P1; RNase P subunit 1; RNaseP protein p40; ribonuclease P (40 kD); ribonuclease P 40kDa subunit; ribonuclease P, 40kD subunit; RNASEP1;
<b>Gene ID</b>	10799
<b>mRNA Refseq</b>	NM_006638

 Tel: 1-631-559-9269 1-516-512-3133

 Email: [info@creative-biomart.com](mailto:info@creative-biomart.com)  Fax: 1-631-938-8127

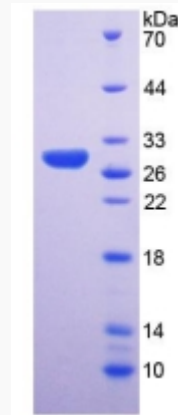
 45-1 Ramsey Road, Shirley, NY 11967, USA

**Protein Refseq** NP\_006629

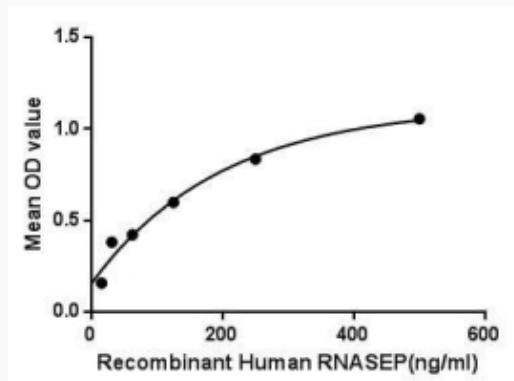
**MIM** 606117

**UniProt ID** O75818

**SDS-PAGE**



**Activity**



 Tel: 1-631-559-9269 1-516-512-3133

 Email: [info@creative-biomart.com](mailto:info@creative-biomart.com)  Fax: 1-631-938-8127

 45-1 Ramsey Road, Shirley, NY 11967, USA