

Recombinant Human RPP40 Protein, Myc/DDK-tagged, C13 and N15-labeled

Cat. No. RPP40-4510H **Lot. No.** (See product label)

SPECIFICATION

Product Overview	RPP40 MS Standard C13 and N15-labeled recombinant protein (NP_006629) with a C-terminal MYC/DDK tag, was expressed in HEK293 cells.
Species	Human
Source	HEK293
Description	Component of ribonuclease P, a protein complex that generates mature tRNA molecules by cleaving their 5'-ends.
Molecular Mass	41.7 kDa
AA Sequence	MATLRRLREAPRHLLVCEKSNFGNHKSRHRHLVQTHYYNYRVSFLIPECGILSEELK NLVMNTGPYYFVKNLPLHELITPEFISTFIKKGSCYALTYNTHIDEDNTVALLPNGKLIL SLDKDTYPEETGLQGHPSQFSGRKIMKFIVSIDLMELSLNLD SKKYERISWSFKEKKPL KDFLLAWHKTGSEESTMMSYFSKYQIQEHQPKVALSTLRDLQCPVLQSSELEGTP EVSCRALELFDWLGAVFSNVDLNNEPNNFISTYCCPEPSTVVAKAYLCTITGFILPEKI CLLLEHLCHYFDEPKLAPWVTL SVQG FADSPVSWEKNEHGFRKGG EHLN FVIFNN QDYWLQMAVGANDHCPPTTRTRPLEQKLISEEDLAANDILDYKDDDDKV
Purity	> 80% as determined by SDS-PAGE and Coomassie blue staining
Stability	Stable for 3 months from receipt of products under proper storage and handling conditions.

 Tel: 1-631-559-9269 1-516-512-3133

 Email: info@creative-biomart.com  Fax: 1-631-938-8127

 45-1 Ramsey Road, Shirley, NY 11967, USA

Storage	Store at -80 centigrade. Avoid repeated freeze-thaw cycles.
Concentration	50 µg/mL as determined by BCA
Storage Buffer	100 mM glycine, 25 mM Tris-HCl, pH 7.3.
GENE INFORMATION	
Gene Name	RPP40 ribonuclease P/MRP 40kDa subunit [Homo sapiens (human)]
Official Symbol	RPP40
Synonyms	RPP40; ribonuclease P/MRP 40kDa subunit; ribonuclease P 40kDa subunit, ribonuclease P1, RNASEP1; ribonuclease P protein subunit p40; bA428J1.3; ribonuclease P1; RNase P subunit 1; RNaseP protein p40; ribonuclease P (40 kD); ribonuclease P 40kDa subunit; ribonuclease P, 40kD subunit; RNASEP1;
Gene ID	10799
mRNA Refseq	NM_006638
Protein Refseq	NP_006629
MIM	606117
UniProt ID	O75818

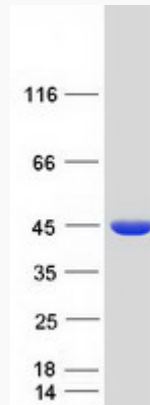
 Tel: 1-631-559-9269 1-516-512-3133

 Email: info@creative-biomart.com  Fax: 1-631-938-8127

 45-1 Ramsey Road, Shirley, NY 11967, USA



SDS-PAGE



Tel: 1-631-559-9269 1-516-512-3133

Email: info@creative-biomart.com Fax: 1-631-938-8127

45-1 Ramsey Road, Shirley, NY 11967, USA