

Recombinant Human RPRD1B Protein, Myc/DDK-tagged, C13 and N15-labeled

Cat. No. RPRD1B-907H **Lot. No.** (See product label)

SPECIFICATION

Product Overview	RPRD1B MS Standard C13 and N15-labeled recombinant protein (NP_067038) with a C-terminal MYC/DDK tag, was expressed in HEK293 cells.
Species	Human
Source	HEK293
Description	Interacts with phosphorylated C-terminal heptapeptide repeat domain (CTD) of the largest RNA polymerase II subunit POLR2A, and participates in dephosphorylation of the CTD by RPAP2. Transcriptional regulator which enhances expression of CCND1. Promotes binding of RNA polymerase II to the CCDN1 promoter and to the termination region before the poly-A site but decreases its binding after the poly-A site. Prevents RNA polymerase II from reading through the 3' end termination site and may allow it to be recruited back to the promoter through promotion of the formation of a chromatin loop. Also enhances the transcription of a number of other cell cycle-related genes including CDK2, CDK4, CDK6 and cyclin-E but not CDKN1A, CDKN1B or cyclin-A. Promotes cell proliferation.
Molecular Mass	36.9 kDa
AA Sequence	MSSFSESALEKKLSELSNSQHSVQTLSSLWLIHHRKHAGPIVSVVHRELKAKSNRKL TFLYLANDVIQNSKRKGPEFTREFESVLVDAFVAREADEGCKKPLERLLNIWQER SVYGGFEFIQQLKLSMEDSKSPPPKATEEKKSLKRTFQQIQEEEDDDYPGSYSPQDP

 Tel: 1-631-559-9269 1-516-512-3133

 Email: info@creative-biomart.com  Fax: 1-631-938-8127

 45-1 Ramsey Road, Shirley, NY 11967, USA

SAGPLLTEELIKALQDLENAASGDATVRQKIASLPQEVQDVSLLLEKITDKEAAERLSKT
 VDEACLLLAEYNGRLAAELEDRRQLARMLVEYTONQKQDVLSEKEKKLEEYKQKLAR
 VTQVRKELKSHIQSLPDLSELLPNVTGGLAPLPSAGDLFSTDTRTRPLEQKLISEEDLA
 ANDILDYKDDDDKV

Purity > 80% as determined by SDS-PAGE and Coomassie blue staining

Stability Stable for 3 months from receipt of products under proper storage and handling conditions.

Storage Store at -80 centigrade. Avoid repeated freeze-thaw cycles.

Concentration 50 µg/mL as determined by BCA

Storage Buffer 100 mM glycine, 25 mM Tris-HCl, pH 7.3.

GENE INFORMATION

Gene Name RPRD1B regulation of nuclear pre-mRNA domain containing 1B [Homo sapiens (human)]

Official Symbol RPRD1B

Synonyms RPRD1B; regulation of nuclear pre-mRNA domain containing 1B; C20orf77, chromosome 20 open reading frame 77; regulation of nuclear pre-mRNA domain-containing protein 1B; CREPT; dJ1057B20.2; DKFZp434P0735; FLJ44520; NET60; cell cycle-related and expression-elevated protein in tumor; cell-cycle related and expression-elevated protein in tumor; C20orf77;

Gene ID 58490

 Tel: 1-631-559-9269 1-516-512-3133

 Email: info@creative-biomart.com  Fax: 1-631-938-8127

 45-1 Ramsey Road, Shirley, NY 11967, USA

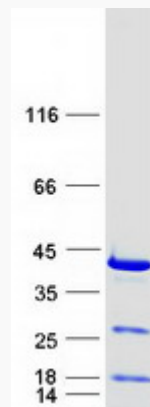
mRNA Refseq [NM_021215](#)

Protein Refseq [NP_067038](#)

MIM [614694](#)

UniProt ID [Q9NQG5](#)

SDS-PAGE



 Tel: 1-631-559-9269 1-516-512-3133

 Email: info@creative-biomart.com  Fax: 1-631-938-8127

 45-1 Ramsey Road, Shirley, NY 11967, USA