

## Recombinant Human RPS11 protein, GST-tagged

Cat. No. RPS11-5174H Lot. No. (See product label)

### SPECIFICATION

|                         |   |
|-------------------------|---|
| <b>Product Overview</b> | Recombinant Human RPS11 protein(P62280)(2-158aa), fused to N-terminal GST tag, was expressed in E. coli.  |
| <b>Species</b>          | Human   |
| <b>Source</b>           | E.coli  |
| <b>ProteinLength</b>    | 2-158aa   |
| <b>Form</b>             | If the delivery form is liquid, the default storage buffer is Tris/PBS-based buffer, 5%-50% glycerol.<br>If the delivery form is lyophilized powder, the buffer before lyophilization is Tris/PBS-based buffer, 6% Trehalose, pH 8.0.                         |
| <b>Molecular Mass</b>   | 45.3 kDa  |
| <b>Purity</b>           | Greater than 90% as determined by SDS-PAGE.   |
| <b>Storage</b>          | Store at -20°C/-80°C upon receipt, aliquoting is necessary for multiple use. Avoid repeated freeze-thaw cycles.   |
| <b>Reconstitution</b>   | Please reconstitute protein in deionized sterile water to a concentration of 0.1-1.0 mg/mL. We recommend to add 5-50% of glycerol (final concentration) and aliquot for long-term storage at -20°C/-80°C. Our default final concentration of glycerol is 50%. |

 Tel: 1-631-559-9269 1-516-512-3133

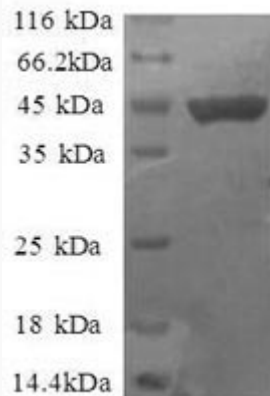
 Email: [info@creative-biomart.com](mailto:info@creative-biomart.com)  Fax: 1-631-938-8127

 45-1 Ramsey Road, Shirley, NY 11967, USA

## GENE INFORMATION

|                        |   |
|------------------------|---|
| <b>Gene Name</b>       | RPS11 ribosomal protein S11 [ Homo sapiens ]                  |
| <b>Official Symbol</b> | RPS11   |
| <b>Synonyms</b>        | RPS11; ribosomal protein S11; 40S ribosomal protein S11; S11; |
| <b>Gene ID</b>         | 6205  |
| <b>mRNA Refseq</b>     | NM_001015   |
| <b>Protein Refseq</b>  | NP_001006   |
| <b>MIM</b>             | 180471  |
| <b>UniProt ID</b>      | P62280  |

### SDS-PAGE



 Tel: 1-631-559-9269 1-516-512-3133

 Email: [info@creative-biomart.com](mailto:info@creative-biomart.com)  Fax: 1-631-938-8127

 45-1 Ramsey Road, Shirley, NY 11967, USA