

Recombinant Human RPS14 Protein, Myc/DDK-tagged, C13 and N15-labeled

Cat. No. RPS14-746H **Lot. No.** (See product label)

SPECIFICATION

Product Overview	RPS14 MS Standard C13 and N15-labeled recombinant protein (NP_001020241) with a C-terminal MYC/DDK tag, was expressed in HEK293 cells.
Species	Human
Source	HEK293
Description	<p>Ribosomes, the organelles that catalyze protein synthesis, consist of a small 40S subunit and a large 60S subunit. Together these subunits are composed of 4 RNA species and approximately 80 structurally distinct proteins. This gene encodes a ribosomal protein that is a component of the 40S subunit. The protein belongs to the S11P family of ribosomal proteins. It is located in the cytoplasm. Transcript variants utilizing alternative transcription initiation sites have been described in the literature. As is typical for genes encoding ribosomal proteins, there are multiple processed pseudogenes of this gene dispersed through the genome. In Chinese hamster ovary cells, mutations in this gene can lead to resistance to emetine, a protein synthesis inhibitor. Multiple alternatively spliced transcript variants encoding the same protein have been found for this gene.</p>
Molecular Mass	16.3 kDa
AA Sequence	MAPRKGKEKKEEQVISLGPQVAEGENVFGVCHIFASFNDTFVHVTDLSGKETICRVT GGMKVKADRDESSPYAAMLAAQDVAQRCKELGITALHIKLRATGGNRTKTPGPGAQ

 Tel: 1-631-559-9269 1-516-512-3133

 Email: info@creative-biomart.com  Fax: 1-631-938-8127

 45-1 Ramsey Road, Shirley, NY 11967, USA

SALRALARSGMKIGRIEDVTPIPSDSTRKGGRRGRRLTRTRPLEQKLISEEDLAAND
ILDYKDDDDKV

Purity > 80% as determined by SDS-PAGE and Coomassie blue staining

Stability Stable for 3 months from receipt of products under proper storage and handling conditions.

Storage Store at -80 centigrade. Avoid repeated freeze-thaw cycles.

Concentration 50 µg/mL as determined by BCA

Storage Buffer 100 mM glycine, 25 mM Tris-HCl, pH 7.3.

GENE INFORMATION

Gene Name RPS14 ribosomal protein S14 [Homo sapiens (human)]

Official Symbol RPS14

Synonyms RPS14; ribosomal protein S14; 40S ribosomal protein S14; emetine resistance; EMTB; S14;

Gene ID 6208

mRNA Refseq NM_001025070

Protein Refseq NP_001020241

MIM 130620

 Tel: 1-631-559-9269 1-516-512-3133

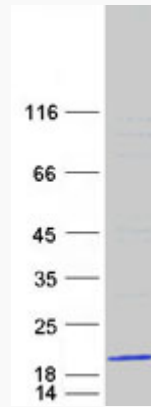
 Email: info@creative-biomart.com  Fax: 1-631-938-8127

 45-1 Ramsey Road, Shirley, NY 11967, USA

UniProt ID

P62263

SDS-PAGE



 Tel: 1-631-559-9269 1-516-512-3133

 Email: info@creative-biomart.com  Fax: 1-631-938-8127

 45-1 Ramsey Road, Shirley, NY 11967, USA