

Recombinant Human RPS21 protein, GST-tagged

Cat. No. RPS21-114H **Lot. No.** (See product label)

SPECIFICATION

Product Overview	Recombinant Human RPS21 protein(NP_001015)(1-81 aa), fused to GST tag, was expressed in E. coli.
Species	Human
Source	E.coli
ProteinLength	1-81 aa
Form	The purified protein was Lyophilized from sterile PBS (58mM Na ₂ HPO ₄ , 17mM NaH ₂ PO ₄ , 68mM NaCl, pH8.). 5 % trehalose and 5 % mannitol are added as protectants before lyophilization.
AA Sequence	MQNDAGEFVDLYVPRKCSASNRIIGAKDHASIQMNVAEVDKVTGRFNGQFKTYAIC GAIRRMGESDDSilRLAKADGIVSK
Purity	90%, by SDS-PAGE with Coomassie Brilliant Blue staining.
Storage	Short-term storage: Store at 2-8°C for (1-2 weeks). Long-term storage: Aliquot and store at -20°C to -80°C for up to 3 months, buffer containing 50% glycerol is recommended for reconstitution. Avoid repeat freeze-thaw cycles.
Reconstitution	Reconstitute at 0.25 g/μl in 200 μl sterile water for short-term storage. Reconstitution with 200 μl 50% glycerol solution is recommended for longer term

 Tel: 1-631-559-9269 1-516-512-3133

 Email: info@creative-biomart.com  Fax: 1-631-938-8127

 45-1 Ramsey Road, Shirley, NY 11967, USA

storage (see Stability and Storage for more details).

If a different concentration is needed for your purposes please adjust the reconstitution volume as required (please note: the ion concentration of the final solution will vary according to the volume used).

Note: Centrifuge vial before opening. When reconstituting, gently pipet and wash down the sides of the vial to ensure full recovery of the protein into solution.

GENE INFORMATION

Gene Name	RPS21 ribosomal protein S21 [Homo sapiens]
Official Symbol	RPS21
Synonyms	RPS21; ribosomal protein S21; 40S ribosomal protein S21; 8.2 kDa differentiation factor; S21;
Gene ID	6227
mRNA Refseq	NM_001024
Protein Refseq	NP_001015
MIM	180477
UniProt ID	P63220

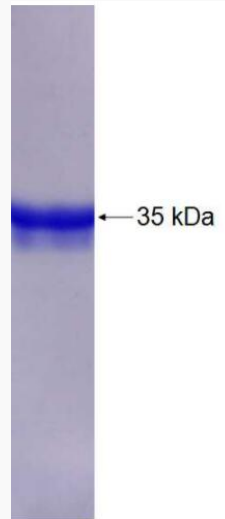
 Tel: 1-631-559-9269 1-516-512-3133

 Email: info@creative-biomart.com  Fax: 1-631-938-8127

 45-1 Ramsey Road, Shirley, NY 11967, USA



SDS-PAGE



Tel: 1-631-559-9269 1-516-512-3133

Email: info@creative-biomart.com Fax: 1-631-938-8127

45-1 Ramsey Road, Shirley, NY 11967, USA