

Recombinant Human RPS24 Protein, Myc/DDK-tagged, C13 and N15-labeled

Cat. No. RPS24-4074H Lot. No. (See product label)

SPECIFICATION

Product Overview	RPS24 MS Standard C13 and N15-labeled recombinant protein (NP_148982) with a C-terminal MYC/DDK tag, was expressed in HEK293 cells.
Species	Human
Source	HEK293
Description	Ribosomes, the organelles that catalyze protein synthesis, consist of a small 40S subunit and a large 60S subunit. Together these subunits are composed of 4 RNA species and approximately 80 structurally distinct proteins. This gene encodes a ribosomal protein that is a component of the 40S subunit. The protein belongs to the S24E family of ribosomal proteins. It is located in the cytoplasm. Multiple transcript variants encoding different isoforms have been found for this gene. As is typical for genes encoding ribosomal proteins, there are multiple processed pseudogenes of this gene dispersed through the genome. Mutations in this gene result in Diamond-Blackfan anemia.
Molecular Mass	15.1 kDa
AA Sequence	MNDTVTIRTRKFMTNRLLQRKQMVIDVLHPGKATVPKTEIREKLAKMYKTPDVIFVFGFRTHFGGGKTTGFGMIYDSL DYAKKNEPKHRLARHGLYEKKKTSRKQRKERKNRMKKVRGTAKANVGAGKKTRTRPLEQKLISEEDLAANDILDYKDDDDKV
Purity	> 80% as determined by SDS-PAGE and Coomassie blue staining

 Tel: 1-631-559-9269 1-516-512-3133

 Email: info@creative-biomart.com  Fax: 1-631-938-8127

 45-1 Ramsey Road, Shirley, NY 11967, USA



Stability	Stable for 3 months from receipt of products under proper storage and handling conditions.
Storage	Store at -80 centigrade. Avoid repeated freeze-thaw cycles.
Concentration	50 µg/mL as determined by BCA
Storage Buffer	100 mM glycine, 25 mM Tris-HCl, pH 7.3.

GENE INFORMATION

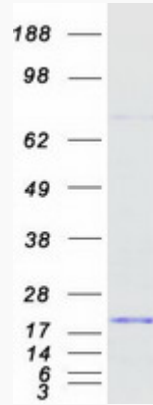
Gene Name	RPS24 ribosomal protein S24 [Homo sapiens (human)]
Official Symbol	RPS24
Synonyms	RPS24; ribosomal protein S24; 40S ribosomal protein S24; S24; DBA3; DKFZp686N1586;
Gene ID	6229
mRNA Refseq	NM_033022
Protein Refseq	NP_148982
MIM	602412
UniProt ID	P62847

Tel: 1-631-559-9269 1-516-512-3133

Email: info@creative-biomart.com Fax: 1-631-938-8127

45-1 Ramsey Road, Shirley, NY 11967, USA

SDS-PAGE



 Tel: 1-631-559-9269 1-516-512-3133

 Email: info@creative-biomart.com  Fax: 1-631-938-8127

 45-1 Ramsey Road, Shirley, NY 11967, USA