

## Recombinant Human RPS27A Protein

Cat. No. RPS27A-003H Lot. No. (See product label)

### SPECIFICATION

**Product Overview** Recombinant Human RPS27A protein without tag was expressed in E.coli

**Species** Human

**Source** E.coli

**Description**

Ubiquitin, a highly conserved protein that has a major role in targeting cellular proteins for degradation by the 26S proteasome, is synthesized as a precursor protein consisting of either polyubiquitin chains or a single ubiquitin fused to an unrelated protein. This gene encodes a fusion protein consisting of ubiquitin at the N terminus and ribosomal protein S27a at the C terminus. When expressed in yeast, the protein is post-translationally processed, generating free ubiquitin monomer and ribosomal protein S27a. Ribosomal protein S27a is a component of the 40S subunit of the ribosome and belongs to the S27AE family of ribosomal proteins. It contains C4-type zinc finger domains and is located in the cytoplasm. Pseudogenes derived from this gene are present in the genome. As with ribosomal protein S27a, ribosomal protein L40 is also synthesized as a fusion protein with ubiquitin; similarly, ribosomal protein S30 is synthesized as a fusion protein with the ubiquitin-like protein fubi. Multiple alternatively spliced transcript variants that encode the same proteins have been identified.

**Molecular Mass** 8.6 kDa

**Purity** ≥95% estimated by SDS-PAGE

 Tel: 1-631-559-9269 1-516-512-3133

 Email: [info@creative-biomart.com](mailto:info@creative-biomart.com)  Fax: 1-631-938-8127

 45-1 Ramsey Road, Shirley, NY 11967, USA

<b>Stability</b>	≥ 2 years
<b>Storage</b>	-80 centigrade
<b>Storage Buffer</b>	50 mM Tris, pH 7.5, 150 mM sodium chloride, containing 5% glycerol
<b>Shipping</b>	Dry ice in continental US, may vary elsewhere.

## GENE INFORMATION

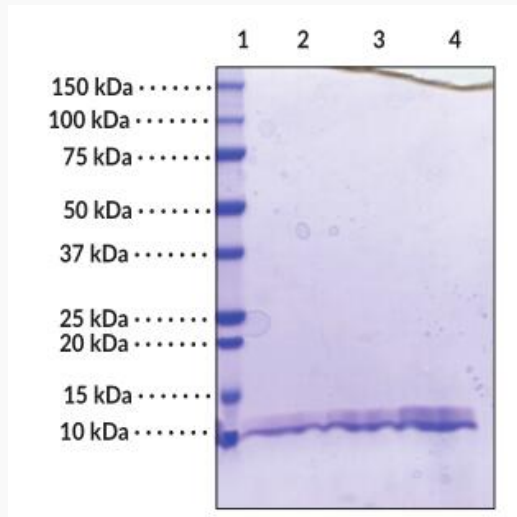
<b>Gene Name</b>	RPS27A ribosomal protein S27a [ Homo sapiens (human) ]
<b>Official Symbol</b>	RPS27A
<b>Synonyms</b>	RPS27A; ribosomal protein S27a; UBC; S27A; CEP80; UBA80; HEL112; UBCEP1; UBCEP80; ubiquitin-40S ribosomal protein S27a; 40S ribosomal protein S27a; epididymis luminal protein 112; ubiquitin C; ubiquitin and ribosomal protein S27a; ubiquitin carboxyl extension protein 80; ubiquitin-CEP80
<b>Gene ID</b>	6233
<b>mRNA Refseq</b>	NM_001135592
<b>Protein Refseq</b>	NP_001129064
<b>MIM</b>	191343
<b>UniProt ID</b>	P0CG48

 Tel: 1-631-559-9269 1-516-512-3133

 Email: [info@creative-biomart.com](mailto:info@creative-biomart.com)  Fax: 1-631-938-8127

 45-1 Ramsey Road, Shirley, NY 11967, USA

**SDS-PAGE Analysis  
of RPS27A**



Lane 1: MW Markers  
Lane 2: Ubiquitin (2 g)  
Lane 3: Ubiquitin (4 g)  
Lane 4: Ubiquitin (8 g)

 Tel: 1-631-559-9269 1-516-512-3133

 Email: [info@creative-biomart.com](mailto:info@creative-biomart.com)  Fax: 1-631-938-8127

 45-1 Ramsey Road, Shirley, NY 11967, USA