

Recombinant Human RPS5 Protein, Myc/DDK-tagged, C13 and N15-labeled

Cat. No. RPS5-6340H **Lot. No.** (See product label)

SPECIFICATION

Product Overview	RPS5 MS Standard C13 and N15-labeled recombinant protein (NP_001000) with a C-terminal MYC/DDK tag, was expressed in HEK293 cells.
Species	Human
Source	HEK293
Description	Ribosomes, the organelles that catalyze protein synthesis, consist of a small 40S subunit and a large 60S subunit. Together these subunits are composed of 4 RNA species and approximately 80 structurally distinct proteins. This gene encodes a ribosomal protein that is a component of the 40S subunit. The protein belongs to the S7P family of ribosomal proteins. It is located in the cytoplasm. Variable expression of this gene in colorectal cancers compared to adjacent normal tissues has been observed, although no correlation between the level of expression and the severity of the disease has been found. As is typical for genes encoding ribosomal proteins, there are multiple processed pseudogenes of this gene dispersed through the genome.
Molecular Mass	22.7 kDa
AA Sequence	MTEWETAAPAVAETPDIKLFGKWSTDDVQINDISLQDYIAVKEKYAKYLPHSAGRYA AKRFRKAQCPIVERLTNSMMMHRNNGKKLMTVRIVKHAFEIIHLLTGENPLQVLVN AIINSGPREDSTRIGRAGTVRRQAVDVSPLRRVNQAIWLLCTGAREAAFRNIKTIAEC

 Tel: 1-631-559-9269 1-516-512-3133

 Email: info@creative-biomart.com  Fax: 1-631-938-8127

 45-1 Ramsey Road, Shirley, NY 11967, USA

LADELINAAKGSSNSYAIKKKDELERVAKSNRTRTRPLEQKLISEEDLAANDILDYKDD
DDKV

Purity > 80% as determined by SDS-PAGE and Coomassie blue staining

Stability Stable for 3 months from receipt of products under proper storage and handling conditions.

Storage Store at -80 centigrade. Avoid repeated freeze-thaw cycles.

Concentration 50 µg/mL as determined by BCA

Storage Buffer 100 mM glycine, 25 mM Tris-HCl, pH 7.3.

GENE INFORMATION

Gene Name RPS5 ribosomal protein S5 [Homo sapiens (human)]

Official Symbol RPS5

Synonyms RPS5; ribosomal protein S5; 40S ribosomal protein S5; S5;

Gene ID 6193

mRNA Refseq NM_001009

Protein Refseq NP_001000

MIM 603630

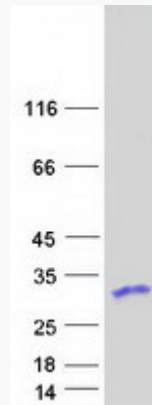
UniProt ID P46782

 Tel: 1-631-559-9269 1-516-512-3133

 Email: info@creative-biomart.com  Fax: 1-631-938-8127

 45-1 Ramsey Road, Shirley, NY 11967, USA

SDS-PAGE



 Tel: 1-631-559-9269 1-516-512-3133

 Email: info@creative-biomart.com  Fax: 1-631-938-8127

 45-1 Ramsey Road, Shirley, NY 11967, USA