

Recombinant Human RPS6 Protein, His tagged

Cat. No. RPS6-30769TH Lot. No. (See product label)

SPECIFICATION

Product Overview	Recombinant Human RPS6 Protein with His tag was expressed in E. coli.
Species	Human
Source	E.coli
ProteinLength	1-249 aa
Description	<p>Ribosomes, the organelles that catalyze protein synthesis, consist of a small 40S subunit and a large 60S subunit. Together these subunits are composed of 4 RNA species and approximately 80 structurally distinct proteins. This gene encodes a cytoplasmic ribosomal protein that is a component of the 40S subunit. The protein belongs to the S6E family of ribosomal proteins. It is the major substrate of protein kinases in the ribosome, with subsets of five C-terminal serine residues phosphorylated by different protein kinases. Phosphorylation is induced by a wide range of stimuli, including growth factors, tumor-promoting agents, and mitogens. Dephosphorylation occurs at growth arrest. The protein may contribute to the control of cell growth and proliferation through the selective translation of particular classes of mRNA. As is typical for genes encoding ribosomal proteins, there are multiple processed pseudogenes of this gene dispersed through the genome.</p>
Molecular Mass	30 kDa
AA Sequence	MHHHHHHHHHHMKNISFPATGCQKLVDDERKLRTFYEKRMATEVAADALGEEW KGYVVRISGGNDKQGFPKQGVLTHTGRVRLLSKKGHSCYRPRRTGERKRKSVRGC

 Tel: 1-631-559-9269 1-516-512-3133

 Email: info@creative-biomart.com  Fax: 1-631-938-8127

 45-1 Ramsey Road, Shirley, NY 11967, USA

IVDANLSVLNLVIVKKGEKDIPGLTDTTVPRRLGPKRASRIRKLFNLSKEDDVRQYVV
 RKPLNKEGKKPRTKAPKIQRLVTPRVLQHKRRRIALKKQRTKKNKEEAAEYAKLLAK
 RMKEAKEKRQEIQIAKRRRLSSLRASTSKSESSQK

Purity > 80% by SDS-PAGE

Storage Store it under sterile conditions at -20 to -80 centigrade. It is recommended that the protein be aliquoted for optimal storage. Avoid repeated freeze-thaw cycles.

Storage Buffer Lyophilized from 0.5% Trehalose, 6M Urea, 100mM sodium phosphate, 10mM sodium chloride, pH 4.5

Reconstitution It is recommended that sterile water be added to the vial to prepare a stock solution of 0.64 mg/mL. Centrifuge the vial at 4 centigrade before opening to recover the entire contents.

GENE INFORMATION

Gene Name RPS6 ribosomal protein S6 [Homo sapiens (human)]

Official Symbol RPS6

Synonyms RPS6; ribosomal protein S6; 40S ribosomal protein S6; phosphoprotein NP33; S6

Gene ID 6194

mRNA Refseq NM_001010

Protein Refseq NP_001001

MIM 180460

 Tel: 1-631-559-9269 1-516-512-3133

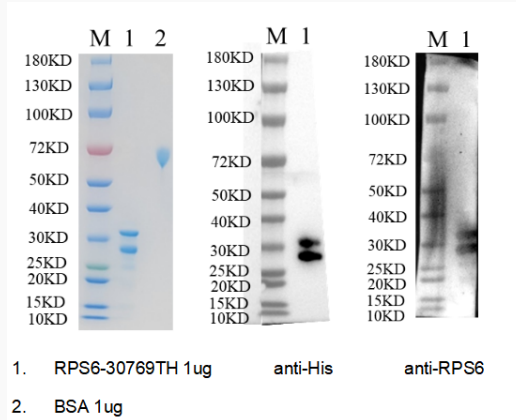
 Email: info@creative-biomart.com  Fax: 1-631-938-8127

 45-1 Ramsey Road, Shirley, NY 11967, USA

UniProt ID

P62753

SDS-PAGE and WB



Reducing 4%-20% SDS-PAGE (CBB stained) and WB (Anti-His Mouse Monoclonal antibody/Rabbit anti-Homo sapiens (Human) RPS6 Polyclonal antibody) analysis profile of purified RPS6.

Tel: 1-631-559-9269 1-516-512-3133

Email: info@creative-biomart.com Fax: 1-631-938-8127

45-1 Ramsey Road, Shirley, NY 11967, USA