

Recombinant Human RPS6KA1 Protein (Met1-Leu735), C-His tagged

Cat. No. RPS6KA1-6200H Lot. No. (See product label)

SPECIFICATION

Product Overview	Recombinant human RPS6KA1 (Met1-Leu735) fused with the C-terminal His tag was expressed in mammalian cells.
Species	Human
Source	Mammalian Cells
ProteinLength	Met1-Leu735
Form	Lyophilized powder/frozen liquid
Molecular Mass	80.85 kDa
Purity	> 90 % as determined by SDS-PAGE
Notes	For research use only.
Storage	Use a manual defrost freezer and avoid repeated freeze thaw cycles. Store at 2 to 8 centigrade for one week. Store at -20 to -80 centigrade for twelve months from the date of receipt.
Storage Buffer	Supplied as solution form in PBS or lyophilized from PBS.
Reconstitution	Reconstitute in sterile water for a stock solution.

 Tel: 1-631-559-9269 1-516-512-3133

 Email: info@creative-biomart.com  Fax: 1-631-938-8127

 45-1 Ramsey Road, Shirley, NY 11967, USA

Shipping They are shipped out with dry ice/blue ice unless customers require otherwise.

GENE INFORMATION

Gene Name RPS6KA1 ribosomal protein S6 kinase, 90kDa, polypeptide 1 [Homo sapiens (human)]

Official Symbol RPS6KA1

Synonyms RPS6KA1; ribosomal protein S6 kinase, 90kDa, polypeptide 1; ribosomal protein S6 kinase, 90kD, polypeptide 1; ribosomal protein S6 kinase alpha-1; HU 1; RSK; RSK1; RSK-1; p90S6K; p90RSK1; p90-RSK 1; MAPKAPK-1a; S6K-alpha 1; S6K-alpha-1; MAPKAP kinase 1a; ribosomal S6 kinase 1; MAPK-activated protein kinase 1a; ribosomal protein S6 kinase alpha 1; 90 kDa ribosomal protein S6 kinase 1; MAP kinase-activated protein kinase 1a; dJ590P13.1 (ribosomal protein S6 kinase, 90kD, polypeptide 1); HU-1; MAPKAPK1A;

Gene ID 6195

mRNA Refseq NM_001006665

Protein Refseq NP_001006666

MIM 601684

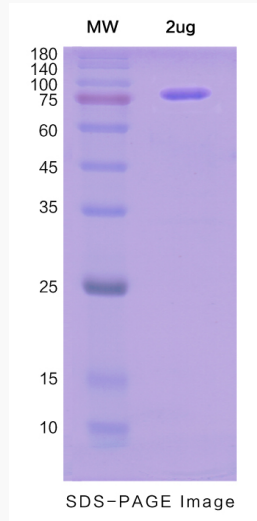
UniProt ID Q15418

 Tel: 1-631-559-9269 1-516-512-3133

 Email: info@creative-biomart.com  Fax: 1-631-938-8127

 45-1 Ramsey Road, Shirley, NY 11967, USA

SDS-PAGE



 Tel: 1-631-559-9269 1-516-512-3133

 Email: info@creative-biomart.com  Fax: 1-631-938-8127

 45-1 Ramsey Road, Shirley, NY 11967, USA