

Active Recombinant Full Length Human RPS6KA4 Protein, GST-tagged

Cat. No. RPS6KA4-4448HF **Lot. No.** (See product label)

SPECIFICATION

Product Overview	Full-length human MSK2 [1-772(end) amino acids of accession number NP_003933.1] was co-expressed as N-terminal GST-fusion protein (114 kDa) with human His-tagged Erk2 [1-360 amino acids of accession number NP_002736.3] using baculovirus expression system. GST-MSK2 was purified by using glutathione sepharose chromatography.
Species	Human
Source	Sf21 Cells
ProteinLength	1-772
Form	50 mM Tris-HCl, 150 mM NaCl, 0.05% Brij35, 1 mM DTT, 10% glycerol, pH7.5
Bio-activity	The activity was measured by off-chip mobility shift assay. The enzyme was incubated with fluorescence-labeled substrate and Mg(or Mn)/ATP. The phosphorylated and unphosphorylated substrates were separated and detected by LabChip™3000.
Purity	76%
Applications	SDS-PAGE
Storage	Store at -80C. Avoid repeating freeze-thaws.

 Tel: 1-631-559-9269 1-516-512-3133

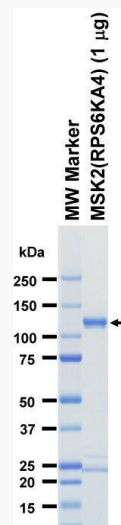
 Email: info@creative-biomart.com  Fax: 1-631-938-8127

 45-1 Ramsey Road, Shirley, NY 11967, USA

GENE INFORMATION

Gene Name	ribosomal protein S6 kinase, 90kDa, polypeptide 4
Official Symbol	RPS6KA4
Synonyms	RPS6KA4;MSK2;RSK-B;S6K-alpha-4
Protein Refseq	NP_003933.1
UniProt ID	O75676

SDS-PAGE

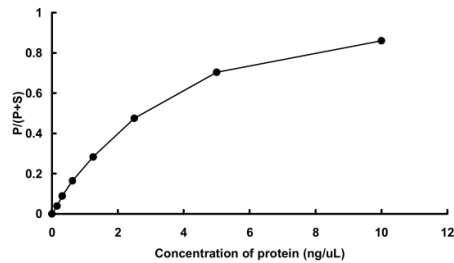


The purity was assessed by SDS-PAGE/CBB staining.

Tel: 1-631-559-9269 1-516-512-3133

Email: info@creative-biomart.com Fax: 1-631-938-8127

45-1 Ramsey Road, Shirley, NY 11967, USA

Activity data**Activity data**

The activity was measured by off-chip mobility shift assay. The enzyme was incubated with fluorescence-labeled substrate and Mg(or Mn)/ATP. The phosphorylated and unphosphorylated substrates were separated and detected by LabChip™3000.

 Tel: 1-631-559-9269 1-516-512-3133

 Email: info@creative-biomart.com  Fax: 1-631-938-8127

 45-1 Ramsey Road, Shirley, NY 11967, USA