

Recombinant Full Length Human RPS6KA5 Protein, C-Myc/DDK-tagged

Cat. No. RPS6KA5-12HFL **Lot. No.** (See product label)

SPECIFICATION

Product Overview	Recombinant Full Length Human RPS6KA5 Protein, fused to Myc/DDK-tag at C-terminus, was expressed in HEK293T.
Species	Human
Source	HEK293
Description	Enables ATP binding activity and protein serine/threonine kinase activity. Involved in several processes, including histone-serine phosphorylation; positive regulation of histone modification; and regulation of transcription, DNA-templated. Located in cytoplasm and nucleoplasm.
Form	25 mM Tris-HCl, 100 mM glycine, pH 7.3, 10% glycerol.
Molecular Mass	89.7 kDa
AA Sequence	MEEEGSSGGAAGTSADGGDGGEQLLTVKHELRTANLTGHAEKVGIENFELLKVLG TGAYGKVFLVRKIS GHDTGKLYAMKVLKATIVQKAKTTEHTRTERQVLEHIRQSPF LVTLHYAFQTETKLHLILDYINGGELF THLSQRERFTEHEVQIYVGEIVLALEHLHLKGLI IYRDIKLENILLDSNGHVVLTDGFLSKEFVADETERA YSFCGTIEYMAPDIVRGGDSG HDKAVDWWSLGVLMYELLTGASPFTVDGEKNSQAEISRRILKSEPPYPQ EMSALAK DLIQRLMKDPKRLGCGPRDADEIKEHLFFQKINWDDLAAKKVPAPFKPVIRDELVDV SNFAE EFTEMDPTYSPAALPQSSEKLFQGYSFVAPSILFKRNAVIDPLQFHMVER PGVTNVARSAMMKDSPFY QHYDLDLKDKPLGEGSFSICRKC VHKKS NQAF AVK IIS

 Tel: 1-631-559-9269 1-516-512-3133

 Email: info@creative-biomart.com  Fax: 1-631-938-8127

 45-1 Ramsey Road, Shirley, NY 11967, USA

KRMEANTQKEITALKLCEGHPNIVKLHEVFHD QLHTFLVMELLNGGELFERIKKKKH
 FSETEASYIMRKLVS AVSHMHDVGVVHRDLKPENLLFTDENDNLE IKIIDFGFARLKP
 PDNQLKTPCFTLHYAAPELLNQNGYDESCDLWSLGVILYTMLSGQVPFQSHDRSL
 T CTSAVEIMKKIKKGD FSFEGEAWKNVSQEAKDLIQGLLTVDPNKRLKMSGLRYNE
 WLQDGSQLSSNPLMT PDILGSSGAAVHTCVKATFHAFNKYKREGFCLQNVDKAPL
 AKRRKMKTSTSTETRSSSSSESSHSSSSHS HGKTTPTKTLQPSNPADSNNPETLFQ
 FSDSVA TRTRPLEQKLISEEDLAANDILDYKDDDDKV

Purity > 80% as determined by SDS-PAGE and Coomassie blue staining.

Notes For testing in cell culture applications, please filter before use. Note that you may experience some loss of protein during the filtration process.

Stability Stable for 12 months from the date of receipt of the product under proper storage and handling conditions. Avoid repeated freeze-thaw cycles.

Storage Store at -80 centigrade.

Concentration >50 ug/mL as determined by microplate BCA method.

Preparation Recombinant protein was captured through anti-DDK affinity column followed by conventional chromatography steps.

Protein Families Druggable Genome, Protein Kinase, Transcription Factors

Protein Pathways Bladder cancer, MAPK signaling pathway, Neurotrophin signaling pathway

Full Length Full L.

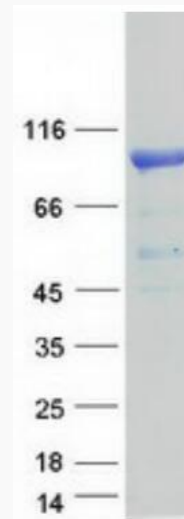
GENE INFORMATION

 Tel: 1-631-559-9269 1-516-512-3133

 Email: info@creative-biomart.com  Fax: 1-631-938-8127

 45-1 Ramsey Road, Shirley, NY 11967, USA

Gene Name	RPS6KA5 ribosomal protein S6 kinase A5 [Homo sapiens (human)]
Official Symbol	RPS6KA5
Synonyms	MSK1; RLPK; MSPK1
Gene ID	9252
mRNA Refseq	NM_004755.4
Protein Refseq	NP_004746.2
MIM	603607
UniProt ID	O75582

SDS-PAGE

Coomassie blue staining of purified RPS6KA5 protein.

 Tel: 1-631-559-9269 1-516-512-3133 Email: info@creative-biomart.com  Fax: 1-631-938-8127 45-1 Ramsey Road, Shirley, NY 11967, USA