

Recombinant Human RPS6KA5 Protein, His-tagged

Cat. No. RPS6KA5-2664H Lot. No. (See product label)

SPECIFICATION

Product Overview	Recombinant Human RPS6KA5 Protein (Glu2-Phe348) with a N-His tag was expressed in E. coli.
Species	Human
Source	E.coli
ProteinLength	Glu2-Phe348
Description	Enables ATP binding activity and protein serine/threonine kinase activity. Involved in several processes, including histone-serine phosphorylation; positive regulation of histone modification; and regulation of transcription, DNA-templated. Located in cytoplasm and nucleoplasm.
Form	Freeze-dried powder
Molecular Mass	Predicted Molecular Mass: 42.5 kDa Accurate Molecular Mass: 44 kDa
Endotoxin	<1.0 EU per 1g (determined by the LAL method).
Purity	> 95%
Applications	Positive Control; Immunogen; SDS-PAGE; WB.

 Tel: 1-631-559-9269 1-516-512-3133

 Email: info@creative-biomart.com  Fax: 1-631-938-8127

 45-1 Ramsey Road, Shirley, NY 11967, USA

Stability	The thermal stability is described by the loss rate. The loss rate was determined by accelerated thermal degradation test, that is, incubate the protein at 37 centigrade for 48h, and no obvious degradation and precipitation were observed. The loss rate is less than 5% within the expiration date under appropriate storage condition.
Storage	Avoid repeated freeze/thaw cycles. Store at 2-8 centigrade for one month. Aliquot and store at -80 centigrade for 12 months.
Storage Buffer	20mM Tris, 150mM NaCl, pH8.0, containing 1mM EDTA, 1mM DTT, 0.01% SKL, 5% Trehalose and Proclin300.
Reconstitution	Reconstitute in 20mM Tris, 150mM NaCl (pH8.0) to a concentration of 0.1-1.0 mg/mL. Do not vortex.

GENE INFORMATION

Gene Name	RPS6KA5 ribosomal protein S6 kinase, 90kDa, polypeptide 5 [Homo sapiens (human)]
Official Symbol	RPS6KA5
Synonyms	RPS6KA5; ribosomal protein S6 kinase, 90kDa, polypeptide 5; ribosomal protein S6 kinase, 90kD, polypeptide 5; ribosomal protein S6 kinase alpha-5; MSK1; RLPK; RSKL; S6K-alpha-5; RSK-like protein kinase; 90 kDa ribosomal protein S6 kinase 5; nuclear mitogen- and stress-activated protein kinase 1; MSPK1; MGC1911;
Gene ID	9252
mRNA Refseq	NM_004755
Protein Refseq	NP_004746

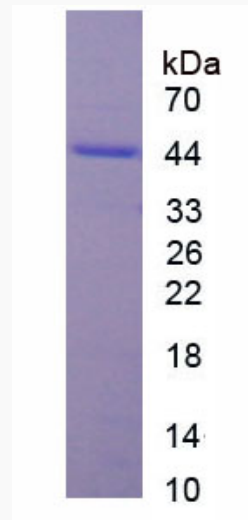
 Tel: 1-631-559-9269 1-516-512-3133

 Email: info@creative-biomart.com  Fax: 1-631-938-8127

 45-1 Ramsey Road, Shirley, NY 11967, USA

MIM 603607

UniProt ID O75582



 Tel: 1-631-559-9269 1-516-512-3133

 Email: info@creative-biomart.com  Fax: 1-631-938-8127

 45-1 Ramsey Road, Shirley, NY 11967, USA