

Recombinant Human RPS6KA5 Protein, Myc/DDK-tagged, C13 and N15-labeled

Cat. No. RPS6KA5-4779H **Lot. No.** (See product label)

SPECIFICATION

Product Overview	RPS6KA5 MS Standard C13 and N15-labeled recombinant protein (NP_004746) with a C-terminal MYC/DDK tag, was expressed in HEK293 cells.
Species	Human
Source	HEK293
Description	RPS6KA5 (Ribosomal Protein S6 Kinase A5) is a Protein Coding gene. Diseases associated with RPS6KA5 include Septic Myocarditis and Coffin-Lowry Syndrome. Among its related pathways are Adenylate cyclase inhibitory pathway and Nuclear Events (kinase and transcription factor activation). Gene Ontology (GO) annotations related to this gene include transferase activity, transferring phosphorus-containing groups and protein tyrosine kinase activity. An important paralog of this gene is RPS6KA4.
Molecular Mass	89.7 kDa
AA Sequence	MEEEGGSSGGAAGTSADGGDGGEQLLTVKHELRTANLTGHAEKVGIENFELLKVLG TGAYGKVFLVRKISGHDTGKLYAMKVLK KATIVQKAKTTEHTRTERQVLEHIRQSPFL VTLHYAFQTETKLHLILDYINGGELFTHLSQRERFTEHEVQIYVGEIVLALEHLHLKLGII YRDIKLENILLDSNGHVVLTD FGLSKEFVADETERAYSFCGTIEYMAPDIVRGGDSGH DKAVDWWSLGVLMYELLTGASPFTVDGEKNSQAEISRRIKSEPPYPQEMSALAKD LIQRLLMKDPKKRLGCGPRDADEIKEHLFFQKINWDDLA AKKVPAPFKPVIRDEL DVS

 Tel: 1-631-559-9269 1-516-512-3133

 Email: info@creative-biomart.com  Fax: 1-631-938-8127

 45-1 Ramsey Road, Shirley, NY 11967, USA



NFAEEFTEMDPTYSPAALPQSSEKLFQGYSFVAPSILFKRNAVIDPLQFHMGVERP
 GVTNVARSAMMKDSPFYQHYDLDLKDKPLGEGSFSICRKCVCVHKKSNQAFVAVKIISKR
 MEANTQKEITALKLCEGHPNIVKLHEVFHDQLHTFLVMELLNGGELFERIKKKKHSE
 TEASYIMRKLVSASVSHMHDVGVVHRDLKPENLLFTDENDNLEIKIIDFGFARLKPPDN
 QPLKTPCFTLHYAAPPELLNQNGYDESCDLWSLGVILYTMLSGQVVPFQSHDRSLTCT
 SAVEIMKKIKKGDFFSFEGEAWKNVSQEAKDLIQGLLTVDPNKRLKMSGLRYNEWLQ
 DGSQLSSNPLMTPDILGSSGAAVHTCVKATFHAFNKYKREGFCLQNVDKAPLAKRR
 KMKKTSTSTETRSSSSSESSHSSSSSHSHGKTTPTKTLQPSNPADSNNPETLQFSDS
 VATRTRPLEQKLISEEDLAANDILDYKDDDDKV

Purity	> 80% as determined by SDS-PAGE and Coomassie blue staining
Stability	Stable for 3 months from receipt of products under proper storage and handling conditions.
Storage	Store at -80 centigrade. Avoid repeated freeze-thaw cycles.
Concentration	50 µg/mL as determined by BCA
Storage Buffer	100 mM glycine, 25 mM Tris-HCl, pH 7.3.

GENE INFORMATION

Gene Name	RPS6KA5 ribosomal protein S6 kinase A5 [Homo sapiens (human)]
Official Symbol	RPS6KA5
Synonyms	RPS6KA5; ribosomal protein S6 kinase, 90kDa, polypeptide 5; ribosomal protein S6 kinase, 90kD, polypeptide 5; ribosomal protein S6 kinase alpha-5; MSK1; RLPK; RSKL; S6K-alpha-5; RSK-like protein kinase; 90 kDa ribosomal protein S6 kinase 5; nuclear mitogen- and stress-activated protein kinase 1; MSPK1; MGC1911;

Gene ID 9252

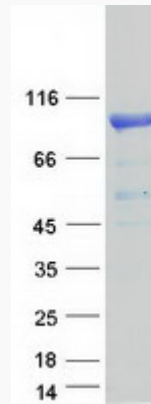
mRNA Refseq NM_004755

Protein Refseq NP_004746

MIM 603607

UniProt ID O75582

SDS-PAGE



Tel: 1-631-559-9269 1-516-512-3133

Email: info@creative-biomart.com Fax: 1-631-938-8127

45-1 Ramsey Road, Shirley, NY 11967, USA