

Active Recombinant Full Length Human RPS6KA5 Protein, GST-tagged

Cat. No. RPS6KA5-5368HF **Lot. No.** (See product label)

SPECIFICATION

Product Overview Full-length human MSK1 [1-802(end) amino acids of accession number NP_004746.2] was co-expressed as N-terminal GST-fusion protein (117 kDa) with human His-tagged Erk2 [1-360 amino acids of accession number NP_002736.3] using baculovirus expression system. GST-MSK1 was purified by using glutathione sepharose chromatography.

Species Human

Source Sf21 Cells

ProteinLength 1-802

Form 50 mM Tris-HCl, 150 mM NaCl, 0.05% Brij35, 1 mM DTT, 10% glycerol, pH7.5

Bio-activity The activity was measured by off-chip mobility shift assay. The enzyme was incubated with fluorescence-labeled substrate and Mg(or Mn)/ATP. The phosphorylated and unphosphorylated substrates were separated and detected by LabChip™3000.

Purity 94%

Applications SDS-PAGE

Storage Store at -80C. Avoid repeating freeze-thaws.

 Tel: 1-631-559-9269 1-516-512-3133

 Email: info@creative-biomart.com  Fax: 1-631-938-8127

 45-1 Ramsey Road, Shirley, NY 11967, USA

GENE INFORMATION

Gene Name ribosomal protein S6 kinase, 90kDa, polypeptide 5

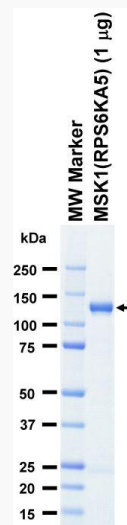
Official Symbol RPS6KA5

Synonyms RPS6KA5;MSK1;MSPK1;RLPK

Protein Refseq [NP_004746.2](#)

UniProt ID [O75582](#)

SDS-PAGE

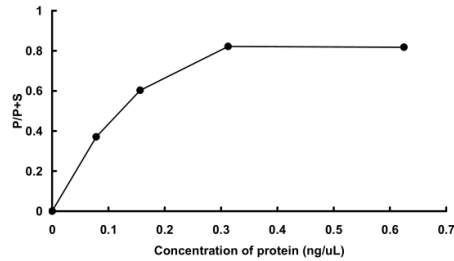


The purity was assessed by SDS-PAGE/CBB staining.

 Tel: 1-631-559-9269 1-516-512-3133

 Email: info@creative-biomart.com  Fax: 1-631-938-8127

 45-1 Ramsey Road, Shirley, NY 11967, USA

Activity data**Activity data**

The activity was measured by off-chip mobility shift assay. The enzyme was incubated with fluorescence-labeled substrate and Mg(or Mn)/ATP. The phosphorylated and unphosphorylated substrates were separated and detected by LabChip™3000.

 Tel: 1-631-559-9269 1-516-512-3133

 Email: info@creative-biomart.com  Fax: 1-631-938-8127

 45-1 Ramsey Road, Shirley, NY 11967, USA