

Recombinant Human RPS6KB1 Protein, His-tagged

Cat. No. RPS6KB1-13H Lot. No. (See product label)

SPECIFICATION

Product Overview	Recombinant Human RPS6KB1(Phe91~Phe352) fused with His tag at N-terminal was expressed in E. coli.
Species	Human
Source	E.coli
ProteinLength	Phe91~Phe352
Description	This gene encodes a member of the ribosomal S6 kinase family of serine/threonine kinases. The encoded protein responds to mTOR (mammalian target of rapamycin) signaling to promote protein synthesis, cell growth, and cell proliferation. Activity of this gene has been associated with human cancer. Alternatively spliced transcript variants have been observed. The use of alternative translation start sites results in isoforms with longer or shorter N-termini which may differ in their subcellular localizations. There are two pseudogenes for this gene on chromosome 17.
Form	PBS, pH7.4, containing 0.01% SKL, 1mM DTT, 5% Trehalose and Proclin300.
Molecular Mass	33.2kDa
Endotoxin	<1.0EU per 1g (determined by the LAL method)
Purity	> 90%

 Tel: 1-631-559-9269 1-516-512-3133

 Email: info@creative-biomart.com  Fax: 1-631-938-8127

 45-1 Ramsey Road, Shirley, NY 11967, USA

Applications	Positive Control; Immunogen; SDS-PAGE; WB.
Storage	Avoid repeated freeze/thaw cycles. Store at 2-8 centigrade for one month. Aliquot and store at -80 centigrade for 12 months.
Reconstitution	Reconstitute in PBS or others.

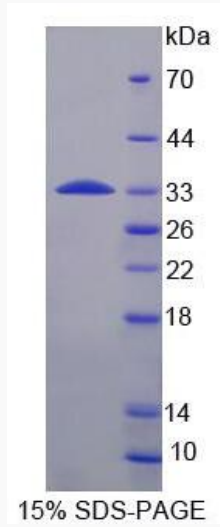
GENE INFORMATION

Gene Name	RPS6KB1 ribosomal protein S6 kinase, 70kDa, polypeptide 1 [Homo sapiens]
Official Symbol	RPS6KB1
Synonyms	RPS6KB1; ribosomal protein S6 kinase, 70kDa, polypeptide 1; ribosomal protein S6 kinase, 70kD, polypeptide 1 , STK14A; ribosomal protein S6 kinase beta-1; p70(S6K) alpha; PS6K; S6K1; P70S6K1; p70 S6KA; S6K-beta-1; p70 S6K-alpha; p70 S6 kinase, alpha 1; p70 S6 kinase, alpha 2; ribosomal protein S6 kinase I; serine/threonine kinase 14 alpha; serine/threonine-protein kinase 14A; 70 kDa ribosomal protein S6 kinase 1; S6K; STK14A; p70-S6K; p70-alpha; p70(S6K)-alpha;
Gene ID	6198
mRNA Refseq	NM_003161
Protein Refseq	NP_003152
MIM	608938
UniProt ID	P23443

 Tel: 1-631-559-9269 1-516-512-3133

 Email: info@creative-biomart.com  Fax: 1-631-938-8127

 45-1 Ramsey Road, Shirley, NY 11967, USA



Tel: 1-631-559-9269 1-516-512-3133

Email: info@creative-biomart.com Fax: 1-631-938-8127

45-1 Ramsey Road, Shirley, NY 11967, USA