

Active Recombinant Full Length Human RPS6KB1 Protein, C-Flag-tagged

Cat. No. RPS6KB1-233HFL **Lot. No.** (See product label)

SPECIFICATION

Product Overview	Recombinant Full Length Human RPS6KB1 Protein, fused to Flag-tag at C-terminus, was expressed in Mammalian cells.
Species	Human
Source	Mammalian Cells
Description	This gene encodes a member of the ribosomal S6 kinase family of serine/threonine kinases. The encoded protein responds to mTOR (mammalian target of rapamycin) signaling to promote protein synthesis, cell growth, and cell proliferation. Activity of this gene has been associated with human cancer. Alternatively spliced transcript variants have been observed. The use of alternative translation start sites results in isoforms with longer or shorter N-termini which may differ in their subcellular localizations. There are two pseudogenes for this gene on chromosome 17.
Form	25 mM Tris HCl, pH 7.3, 100 mM glycine, 10% glycerol.
Bio-activity	EMSA reaction
Molecular Mass	59 kDa
AA Sequence	MRRRRRRDGFYPAPDFRDREAEDMAGVFDIDLDPEDAGSEDELEEGGQLNESM DHGGVGPYELGMEHCE KFEISETSVNRGPEKIRPECFELLRVLGKGGYGVKVFQVRK VTGANTGKIFAMKVLKKAMIVRNAKDTAHT KAERNILEEVKHPFIVDLIYAFQTGGKL

 Tel: 1-631-559-9269 1-516-512-3133

 Email: info@creative-biomart.com  Fax: 1-631-938-8127

 45-1 Ramsey Road, Shirley, NY 11967, USA

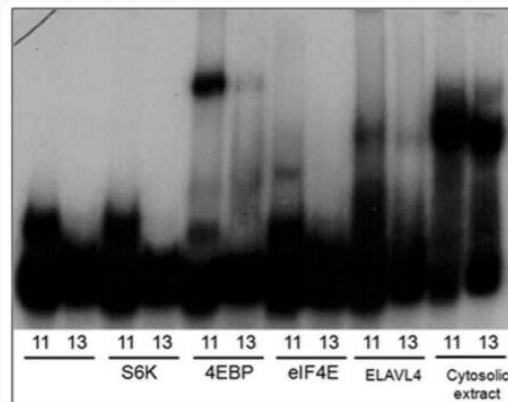


YLILEYLSGGELFMQLEREGIFMEDTACFYLAEISMALGHLH QKGIYRDLKPENIMLN
 HQGHVKLTDGFLCKESIHDGTVTHTFCGTIEYMAPEILMRSGHNRAVDWWSLG AL
 MYDMLTGAPPFTGENRKKTKILKCKLNLPPYLTQEARDLLKLLKRNAASRLGAGP
 GDAGEVQAHP FFRHINWEELLARKVEPPFKPLLQSEEDVSQFDSKFTRQTPVDSPD
 DSTLSESANQVFLGFTYVAPSVLE SVKEKFSFEPKIRSPRRFIGSPRTPVSPVKFSP
 GDFWGRGASASTANPQTPVEYPMETSGIEQMDVTMSG
 EASAPLPIRQPNSGPYKKQAFPMISKRPEHLRMNLTRTRPLEQKLISEEDLAANDILD
 YKDDDDKV

Purity	> 80% as determined by SDS-PAGE and Coomassie blue staining.
Stability	Stable for 12 months from the date of receipt of the product under proper storage and handling conditions. Avoid repeated freeze-thaw cycles.
Storage	Store at -80 centigrade.
Concentration	>50 ug/mL as determined by microplate BCA method.
Preparation	Recombinant protein was captured through anti-DDK affinity column followed by conventional chromatography steps.
Protein Families	Druggable Genome, Protein Kinase
Protein Pathways	Acute myeloid leukemia, ErbB signaling pathway, Fc gamma R-mediated phagocytosis, Insulin signaling pathway, mTOR signaling pathway, TGF-beta signaling pathway
Full Length	Full L.

GENE INFORMATION

Gene Name	RPS6KB1 ribosomal protein S6 kinase B1 [Homo sapiens (human)]
Official Symbol	RPS6KB1
Synonyms	S6K; PS6K; S6K1; STK14A; p70-S6K; p70 S6KA; p70-alpha; S6K-beta-1; p70(S6K)-alpha
Gene ID	6198
mRNA Refseq	NM_003161.4
Protein Refseq	NP_003152.1
MIM	608938
UniProt ID	P23443



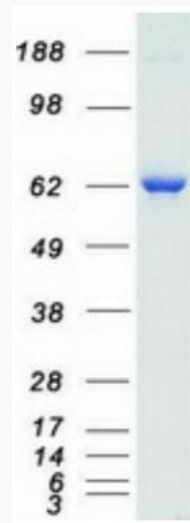
Audiograph of electrophoretic mobility shift assay using labeled RNA probes for the 11 and 13DNR DNR alleles, and purified candidate-binding proteins including S6K. Results confirm the binding for 4E-BP, eIF4E, and ELAVL4, seen as band upshift

 Tel: 1-631-559-9269 1-516-512-3133

 Email: info@creative-biomart.com  Fax: 1-631-938-8127

 45-1 Ramsey Road, Shirley, NY 11967, USA

from the unlabeled oligos.



Coomassie blue staining of purified RPS6KB1 protein.

 Tel: 1-631-559-9269 1-516-512-3133

 Email: info@creative-biomart.com  Fax: 1-631-938-8127

 45-1 Ramsey Road, Shirley, NY 11967, USA