

Recombinant Human RPS6KB1 protein, GST-tagged

Cat. No. RPS6KB1-8524H Lot. No. (See product label)

SPECIFICATION

Product Overview	Recombinant Human RPS6KB1 protein(P23443) (Met1-Leu525) was expressed in Insect Cells, fused with the GST tag at the N-terminus.
Species	Human
Source	Insect Cells
ProteinLength	1-525 aa
Form	Lyophilized from sterile 20mM Tris, 500mM NaCl, pH 7.4, 10% gly, 1mM GSH.
Molecular Mass	The recombinant human RPS6KB1 consists of 750 amino acids and predicts a molecular mass of 85.4 KDa. The apparent molecular mass of the protein is approximately 96 Kda in SDS-PAGE under reducing conditions due to glycosylation.
Endotoxin	< 1.0 EU per µg of the protein as determined by the LAL method.
Purity	> 90 % as determined by SDS-PAGE
Storage	Store it under sterile conditions at -20°C to -80°C upon receiving. Recommend to aliquot the protein into smaller quantities for optimal storage. Avoid repeated freeze-thaw cycles.
Reconstitution	It is recommended that sterile water be added to the vial to prepare a stock solution of 0.2 ug/ul. Centrifuge the vial at 4°C before opening to recover the entire contents.

 Tel: 1-631-559-9269 1-516-512-3133

 Email: info@creative-biomart.com  Fax: 1-631-938-8127

 45-1 Ramsey Road, Shirley, NY 11967, USA

GENE INFORMATION

Gene Name RPS6KB1 ribosomal protein S6 kinase, 70kDa, polypeptide 1 [Homo sapiens]

Official Symbol RPS6KB1

Synonyms RPS6KB1; ribosomal protein S6 kinase, 70kDa, polypeptide 1; ribosomal protein S6 kinase, 70kD, polypeptide 1, STK14A; ribosomal protein S6 kinase beta-1; p70(S6K) alpha; PS6K; S6K1; P70S6K1; p70 S6KA; S6K-beta-1; p70 S6K-alpha; p70 S6 kinase, alpha 1; p70 S6 kinase, alpha 2; ribosomal protein S6 kinase I; serine/threonine kinase 14 alpha; serine/threonine-protein kinase 14A; 70 kDa ribosomal protein S6 kinase 1; S6K; STK14A; p70-S6K; p70-alpha; p70(S6K)-alpha;

Gene ID 6198

mRNA Refseq NM_003161

Protein Refseq NP_003152

MIM 608938

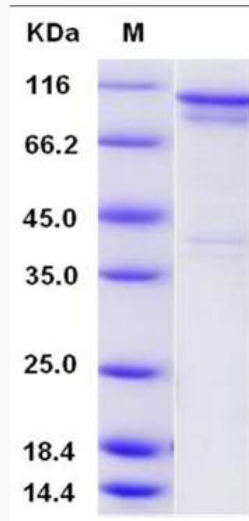
UniProt ID P23443

 Tel: 1-631-559-9269 1-516-512-3133

 Email: info@creative-biomart.com  Fax: 1-631-938-8127

 45-1 Ramsey Road, Shirley, NY 11967, USA

SDS-PAGE



 Tel: 1-631-559-9269 1-516-512-3133

 Email: info@creative-biomart.com  Fax: 1-631-938-8127

 45-1 Ramsey Road, Shirley, NY 11967, USA