

## Recombinant Human RPS6KB2 protein, His & GST-tagged

Cat. No. RPS6KB2-1935H Lot. No. (See product label)

### SPECIFICATION

<b>Product Overview</b>	Recombinant Human RPS6KB2 aa. (Asp194~Pro453 (Accession # Q9UBS0)) fused with N-terminal His & GST tag was produced in E. coli cells.
<b>Species</b>	Human
<b>Source</b>	E.coli
<b>ProteinLength</b>	Asp194~Pro453
<b>Description</b>	This gene encodes a member of the RSK (ribosomal S6 kinase) family of serine/threonine kinases. This kinase contains a kinase catalytic domain and phosphorylates the S6 ribosomal protein and eukaryotic translation initiation factor 4B (eIF4B). Phosphorylation of S6 leads to an increase in protein synthesis and cell proliferation.
<b>Form</b>	Freeze-dried powder
<b>Molecular Mass</b>	Predicted Molecular Mass: 61.6kDa
<b>Endotoxin</b>	<1.0EU per 1ug (determined by the LAL method)
<b>Purity</b>	>95%
<b>Applications</b>	SDS-PAGE; WB; ELISA; IP.

 Tel: 1-631-559-9269 1-516-512-3133

 Email: [info@creative-biomart.com](mailto:info@creative-biomart.com)  Fax: 1-631-938-8127

 45-1 Ramsey Road, Shirley, NY 11967, USA

<b>Stability</b>	The thermal stability is described by the loss rate. The loss rate was determined by accelerated thermal degradation test, that is, incubate the protein at 37°C for 48h, and no obvious degradation and precipitation were observed. The loss rate is less than 5% within the expiration date under appropriate storage condition.
<b>Storage</b>	Avoid repeated freeze/thaw cycles. Store at 2-8°C for one month. Aliquot and store at -80°C for 12 months.
<b>Storage buffer</b>	Supplied as lyophilized form in 100mM NaHCO <sub>3</sub> , 500mM NaCl, pH8.3, containing 1mM EDTA, 1mM DTT, 0.01% sarcosyl, 5% trehalose, and preservative.
<b>Reconstitution</b>	Reconstitute in sterile ddH <sub>2</sub> O.
<b>Isoelectric Point</b>	6.6
<b>GENE INFORMATION</b>	
<b>Gene Name</b>	<a href="#">RPS6KB2 ribosomal protein S6 kinase B2 [ Homo sapiens (human) ]</a>
<b>Official Symbol</b>	<a href="#">RPS6KB2</a>
<b>Synonyms</b>	RPS6KB2; ribosomal protein S6 kinase B2; KLS; SRK; S6K2; STK14B; p70S6Kb; P70-beta; S6K-beta2; P70-beta-1; P70-beta-2; p70(S6K)-beta; ribosomal protein S6 kinase beta-2; 70 kDa ribosomal protein S6 kinase 2; P70S6K2; S6 kinase-related kinase; S6K-beta; S6K-beta-2; p70 S6 kinase beta; p70 S6K-beta; p70 S6KB; p70 ribosomal S6 kinase beta; p70-S6K 2; ribosomal protein S6 kinase, 70kDa, polypeptide 2; serine/threonine-protein kinase 14 beta; serine/threonine-protein kinase 14B
<b>Gene ID</b>	<a href="#">6199</a>

 Tel: 1-631-559-9269 1-516-512-3133

 Email: [info@creative-biomart.com](mailto:info@creative-biomart.com)  Fax: 1-631-938-8127

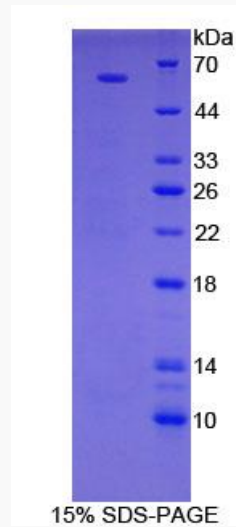
 45-1 Ramsey Road, Shirley, NY 11967, USA

mRNA Refseq [NM\\_003952.2](#)

Protein Refseq [NP\\_003943.2](#)

UniProt ID [Q9UBS0](#)

**SDS-PAGE**



 Tel: 1-631-559-9269 1-516-512-3133

 Email: [info@creative-biomart.com](mailto:info@creative-biomart.com)  Fax: 1-631-938-8127

 45-1 Ramsey Road, Shirley, NY 11967, USA