

Recombinant Full Length Human RPS6KB2 Protein, C-Flag-tagged

Cat. No. RPS6KB2-1988HFL **Lot. No.** (See product label)

SPECIFICATION

Product Overview	Recombinant Full Length Human RPS6KB2 Protein, fused to Flag-tag at C-terminus, was expressed in Mammalian cells.
Species	Human
Source	Mammalian Cells
Description	This gene encodes a member of the RSK (ribosomal S6 kinase) family of serine/threonine kinases. This kinase contains a kinase catalytic domain and phosphorylates the S6 ribosomal protein and eukaryotic translation initiation factor 4B (eIF4B). Phosphorylation of S6 leads to an increase in protein synthesis and cell proliferation.
Form	25 mM Tris HCl, pH 7.3, 100 mM glycine, 10% glycerol.
Molecular Mass	53.3 kDa
AA Sequence	MAAVFDLDLETEEGSEGEPELSPADACPLAELRAAGLEPVGHYEEVELTETSVN VGPERIGPHCFELL RVLGKGGYGKVFQVRKVQGTNLGKIYAMKVLKAKIVRNAKD TAHTRAERNILESVKHPFIVELAYAFQT G GKLYLILECLSGGELFTHLEREGIFLEDTA CFYLAEITLALGHLHSQGIYRDLKPENIMLSSQGHIKL TDFGLCKESIHEGAVTHTFC GTIEYMAPEILVRSGHNRAVDWWSLGALMYDMLTGSPFFTAENRKKTMKD IIRGKL ALPPYLTPDARDLVKKFLKRNPSQRIGGGPGDAADVQRHPFFRHMNWDDLAWRV DPPFRPCLQ SEEDVSQFDTRFTRQTPVDSRDDTALSESANQAFLGFTYVAPSVLDS

 Tel: 1-631-559-9269 1-516-512-3133

 Email: info@creative-biomart.com  Fax: 1-631-938-8127

 45-1 Ramsey Road, Shirley, NY 11967, USA

IKEGFSFQPKLRSPRRLNSSPRV PVSPLKFSPFEGFRPSPSLPEPTELPLPPLLPPPP
 PSTTAPLPIRPPSGTKKSKRGRGRPGR TRTRPLEQKLISEEDLAANDILDYKDDDDK
 V

Purity > 80% as determined by SDS-PAGE and Coomassie blue staining.

Stability Stable for 12 months from the date of receipt of the product under proper storage and handling conditions. Avoid repeated freeze-thaw cycles.

Storage Store at -80 centigrade.

Concentration >50 ug/mL as determined by microplate BCA method.

Preparation Recombinant protein was captured through anti-DDK affinity column followed by conventional chromatography steps.

Protein Families Druggable Genome, Protein Kinase

Protein Pathways Acute myeloid leukemia, ErbB signaling pathway, Fc gamma R-mediated phagocytosis, Insulin signaling pathway, mTOR signaling pathway, TGF-beta signaling pathway

Full Length Full L.

GENE INFORMATION

Gene Name [RPS6KB2 ribosomal protein S6 kinase B2 \[Homo sapiens \(human\) \]](#)

Official Symbol [RPS6KB2](#)

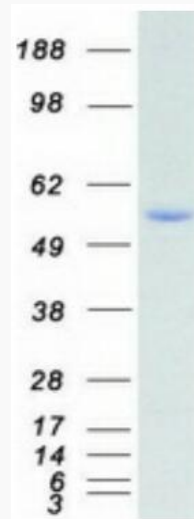
Synonyms KLS; SRK; S6K2; S6KB; STK14B; S6KI(2); S6Kbeta; p70S6Kb; P70-beta; S6K-

 Tel: 1-631-559-9269 1-516-512-3133

 Email: info@creative-biomart.com  Fax: 1-631-938-8127

 45-1 Ramsey Road, Shirley, NY 11967, USA

beta2; P70-beta-1; P70-beta-2; p70(S6K)-beta

Gene ID 6199**mRNA Refseq** NM_003952.3**Protein Refseq** NP_003943.2**MIM** 608939**UniProt ID** Q9UBS0

Coomassie blue staining of purified RPS6KB2 protein.

 Tel: 1-631-559-9269 1-516-512-3133 Email: info@creative-biomart.com  Fax: 1-631-938-8127 45-1 Ramsey Road, Shirley, NY 11967, USA