

## Active Recombinant Full Length Human RPS6KB2 Protein, GST-tagged

Cat. No. RPS6KB2-4909HF Lot. No. (See product label)

### SPECIFICATION

<b>Product Overview</b>	Full-length human p70S6K $\beta$ [1-482(end) amino acids of accession number NP_003943.2] was expressed as N-terminal GST-fusion protein (81 kDa) using baculovirus expression system. GST-p70S6K $\beta$ was purified by using glutathione sepharose chromatography
<b>Species</b>	Human
<b>Source</b>	Sf21 Cells
<b>ProteinLength</b>	1-482(end)
<b>Form</b>	50 mM Tris-HCl, 150 mM NaCl, 0.05% Brij35, 1 mM DTT, 10% glycerol, pH7.5
<b>Bio-activity</b>	The activity was measured by off-chip mobility shift assay(MSA). The enzyme was incubated with fluorescence-labeled substrate and Mg(or Mn)/ATP. The phosphorylated and unphosphorylated substrates were separated and detected by MSA device.
<b>Purity</b>	71%
<b>Applications</b>	SDS-PAGE
<b>Storage</b>	Store at -80C. Avoid repeating freeze-thaws.

 Tel: 1-631-559-9269 1-516-512-3133

 Email: [info@creative-biomart.com](mailto:info@creative-biomart.com)  Fax: 1-631-938-8127

 45-1 Ramsey Road, Shirley, NY 11967, USA

## GENE INFORMATION

**Gene Name** ribosomal protein S6 kinase, 70kDa, polypeptide 2

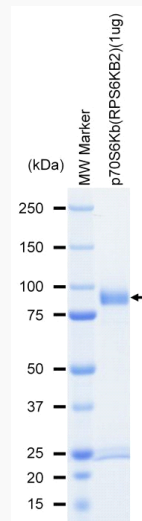
**Official Symbol** RPS6KB2

**Synonyms** RPS6KB2;KLS;P70-beta;P70-beta-1;P70-beta-2;S6K-beta2;S6K2;S6KB;S6KI(2);S6Kbeta;SRK;STK14B;p70(S6K)-beta;p70S6Kb;P70-BETA

**Protein Refseq** [NP\\_003943.2](#)

**UniProt ID** [Q9UBS0](#)

## SDS-PAGE

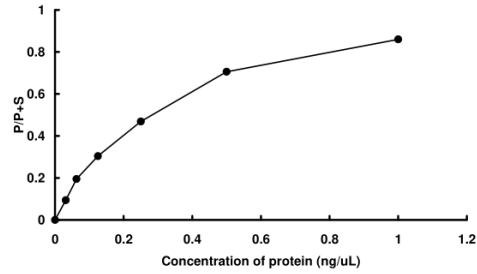


The purity was assessed by SDS-PAGE/CBB staining.

 Tel: 1-631-559-9269 1-516-512-3133

 Email: [info@creative-biomart.com](mailto:info@creative-biomart.com)  Fax: 1-631-938-8127

 45-1 Ramsey Road, Shirley, NY 11967, USA

**Activity data****Activity data**

The activity was measured by off-chip mobility shift assay(MSA). The enzyme was incubated with fluorescence-labeled substrate and Mg(or Mn)/ATP. The phosphorylated and unphosphorylated substrates were separated and detected by MSA device.

 Tel: 1-631-559-9269 1-516-512-3133

 Email: [info@creative-biomart.com](mailto:info@creative-biomart.com)  Fax: 1-631-938-8127

 45-1 Ramsey Road, Shirley, NY 11967, USA