

# Recombinant Human RPS6KB2 Protein (Asp194-Pro453), N-His tagged

**Cat. No.** RPS6KB2-6202H    **Lot. No.** (See product label)

## SPECIFICATION

<b>Product Overview</b>	Recombinant human RPS6KB2 (Asp194-Pro453) fused with the N-His tag was expressed in E. coli.
<b>Species</b>	Human
<b>Source</b>	E.coli
<b>ProteinLength</b>	Asp194-Pro453
<b>Form</b>	Lyophilized powder/frozen liquid
<b>Molecular Mass</b>	31.48 kDa
<b>Purity</b>	> 90 % as determined by SDS-PAGE
<b>Notes</b>	For research use only.
<b>Storage</b>	Use a manual defrost freezer and avoid repeated freeze thaw cycles. Store at 2 to 8 centigrade for one week. Store at -20 to -80 centigrade for twelve months from the date of receipt.
<b>Storage Buffer</b>	0.01M PBS, pH 7.4, 0.02 % NLS
<b>Reconstitution</b>	Reconstitute in sterile water for a stock solution.

 Tel: 1-631-559-9269    1-516-512-3133

 Email: [info@creative-biomart.com](mailto:info@creative-biomart.com)     Fax: 1-631-938-8127

 45-1 Ramsey Road, Shirley, NY 11967, USA

**Shipping** They are shipped out with dry ice/blue ice unless customers require otherwise.

## GENE INFORMATION

**Gene Name** RPS6KB2 ribosomal protein S6 kinase, 70kDa, polypeptide 2 [ Homo sapiens (human) ]

**Official Symbol** RPS6KB2

**Synonyms** RPS6KB2; ribosomal protein S6 kinase, 70kDa, polypeptide 2; ribosomal protein S6 kinase, 70kD, polypeptide 2; ribosomal protein S6 kinase beta-2; KLS; P70 BETA; p70S6Kb; STK14B; P70S6K2; S6K-beta; p70 S6KB; p70-S6K 2; S6K-beta-2; p70 S6K-beta; p70 S6 kinase beta; S6 kinase-related kinase; p70 ribosomal S6 kinase beta; serine/threonine-protein kinase 14B; 70 kDa ribosomal protein S6 kinase 2; serine/threonine-protein kinase 14 beta; SRK; S6K2; P70-beta; S6K-beta2; P70-beta-1; P70-beta-2; p70 (S6K)-beta;

**Gene ID** 6199

**mRNA Refseq** NM\_003952

**Protein Refseq** NP\_003943

**MIM** 608939

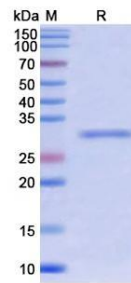
**UniProt ID** Q9UBS0

 Tel: 1-631-559-9269 1-516-512-3133

 Email: [info@creative-biomart.com](mailto:info@creative-biomart.com)  Fax: 1-631-938-8127

 45-1 Ramsey Road, Shirley, NY 11967, USA

**SDS-PAGE**



 Tel: 1-631-559-9269 1-516-512-3133

 Email: [info@creative-biomart.com](mailto:info@creative-biomart.com)  Fax: 1-631-938-8127

 45-1 Ramsey Road, Shirley, NY 11967, USA