

Recombinant Human RPS7 Protein, MYC/DDK-tagged, C13 and N15-labeled

Cat. No. RPS7-117H **Lot. No.** (See product label)

SPECIFICATION

Product Overview	RPS7 MS Standard C13 and N15-labeled recombinant protein (NP_001002) with a C-terminal MYC/DDK tag, was expressed in HEK293 cells.
Species	Human
Source	HEK293
Description	Ribosomes, the organelles that catalyze protein synthesis, consist of a small 40S subunit and a large 60S subunit. Together these subunits are composed of 4 RNA species and approximately 80 structurally distinct proteins. This gene encodes a ribosomal protein that is a component of the 40S subunit. The protein belongs to the S7E family of ribosomal proteins. It is located in the cytoplasm. As is typical for genes encoding ribosomal proteins, there are multiple processed pseudogenes of this gene dispersed through the genome.
Molecular Mass	21.9 kDa
AA Sequence	MFSSSAKIVKPNGEKPDEFESGISQALLELEMNSDLKAQLRELNITAAKEIEVGGGRK AIIIFVVPVQLKSFQKIQVRLVRELEKKFSGKHVVVIAQRRILPKPTRKSRTKNKQKRP RSRTLTAVHDAILEDLVFPSEIVGKRIRVKLDGSRLIKVHLDKAQQNNVEHKVETFSG VYKKLTGKDVNFEPFQLTRTRPLEQKLISEEDLAANDILDYKDDDDKV
Purity	> 80% as determined by SDS-PAGE and Coomassie blue staining

 Tel: 1-631-559-9269 1-516-512-3133

 Email: info@creative-biomart.com  Fax: 1-631-938-8127

 45-1 Ramsey Road, Shirley, NY 11967, USA

Stability	Stable for 3 months from receipt of products under proper storage and handling conditions.
Storage	Store at -80 centigrade. Avoid repeated freeze-thaw cycles.
Concentration	50 µg/mL as determined by BCA
Storage Buffer	100 mM glycine, 25 mM Tris-HCl, pH 7.3.

GENE INFORMATION

Gene Name	RPS7 ribosomal protein S7 [Homo sapiens (human)]
Official Symbol	RPS7
Synonyms	RPS7; ribosomal protein S7; DBA8; eS7; S7; 40S ribosomal protein S7; small ribosomal subunit protein eS7; EC 3.6.5.3
Gene ID	6201
mRNA Refseq	NM_001011
Protein Refseq	NP_001002
MIM	603658
UniProt ID	P62081

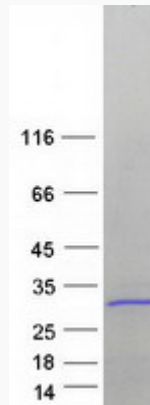
 Tel: 1-631-559-9269 1-516-512-3133

 Email: info@creative-biomart.com  Fax: 1-631-938-8127

 45-1 Ramsey Road, Shirley, NY 11967, USA



SDS-PAGE



Tel: 1-631-559-9269 1-516-512-3133

Email: info@creative-biomart.com Fax: 1-631-938-8127

45-1 Ramsey Road, Shirley, NY 11967, USA