

Recombinant Human RPS7 Protein (Met1-Leu194), C-His tagged


Cat. No. RPS7-6203H Lot. No. (See product label)

SPECIFICATION

Product Overview	Recombinant human RPS7 (Met1-Leu194) fused with the C-terminal His tag was expressed in E. coli.
Species	Human
Source	E.coli
ProteinLength	Met1-Leu194
Form	Lyophilized powder/frozen liquid
Molecular Mass	21.34 kDa
Purity	> 90 % as determined by SDS-PAGE
Notes	For research use only.
Storage	Use a manual defrost freezer and avoid repeated freeze thaw cycles. Store at 2 to 8 centigrade for one week. Store at -20 to -80 centigrade for twelve months from the date of receipt.
Storage Buffer	Supplied as solution form in PBS or lyophilized from PBS.
Reconstitution	Reconstitute in sterile water for a stock solution.

 Tel: 1-631-559-9269 1-516-512-3133

 Email: info@creative-biomart.com  Fax: 1-631-938-8127

 45-1 Ramsey Road, Shirley, NY 11967, USA

Shipping

They are shipped out with dry ice/blue ice unless customers require otherwise.

GENE INFORMATION**Gene Name**

RPS7 ribosomal protein S7 [Homo sapiens (human)]

Official Symbol

RPS7

Synonyms

RPS7; ribosomal protein S7; 40S ribosomal protein S7; S7; DBA8;

Gene ID

6201

mRNA Refseq

NM_001011

Protein Refseq



NP_001002

MIM

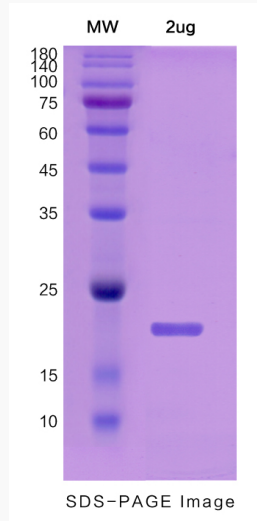
603658


UniProt ID

P62081


 Tel: 1-631-559-9269 1-516-512-3133 Email: info@creative-biomart.com  Fax: 1-631-938-8127 45-1 Ramsey Road, Shirley, NY 11967, USA

SDS-PAGE



 Tel: 1-631-559-9269 1-516-512-3133

 Email: info@creative-biomart.com  Fax: 1-631-938-8127

 45-1 Ramsey Road, Shirley, NY 11967, USA