

## Recombinant Human RPSA Protein (2-294 aa), His-tagged

Cat. No. RPSA-2508H Lot. No. (See product label)

### SPECIFICATION

<b>Product Overview</b>	Recombinant Human RPSA Protein (2-294 aa) is produced by Yeast expression system. This protein is fused with a 6xHis tag at the N-terminal. Research Area: Cardiovascular. Protein Description: Partial.
<b>Species</b>	Human
<b>Source</b>	Yeast
<b>ProteinLength</b>	2-294 aa
<b>Description</b>	Required for the assembly and/or stability of the 40S ribosomal subunit. Required for the processing of the 20S rRNA-precursor to mature 18S rRNA in a late step of the maturation of 40S ribosomal subunits. Also functions as a cell surface receptor for laminin. Plays a role in cell adhesion to the basement membrane and in the consequent activation of signaling transduction pathways. May play a role in cell fate determination and tissue morphogenesis. Acts as a PPP1R16B-dependent substrate of PPP1CA.
<b>Form</b>	Tris-based buffer, 50% glycerol
<b>Molecular Mass</b>	34.6 kDa
<b>AA Sequence</b>	SGALDVLQMKEEDVLKFLAAGTHLGGTNLDFQMEQYIYKRKSDGIYIINLKRTWEKLL LAARAIVAIENPADVSVISSRNTGQRAVLKFAAATGATPIAGRFTPGTFTNQIQAARE PRLLVVTDPRAHQPLTEASYVNLPTIALCNTDSPLRYVDIAIPCNNKGAHSVGLMW

 Tel: 1-631-559-9269 1-516-512-3133

 Email: [info@creative-biomart.com](mailto:info@creative-biomart.com)  Fax: 1-631-938-8127

 45-1 Ramsey Road, Shirley, NY 11967, USA

WMLAREVLRMRGTISRHPWEVMPDLYFYRDPEEIEKEEQAAA EKAVTKEEFQGE  
 WTAPAPEFTATQPEVADWSEGVQVPSVPIQQFPTEDWSAQPATEDWSAAPTAQAT  
 EWVGATTDW

**Purity** > 85% as determined by SDS-PAGE.

**Notes** Repeated freezing and thawing is not recommended. Store working aliquots at 4 centigrade for up to one week.

**Storage** The shelf life is related to many factors, storage state, buffer ingredients, storage temperature and the stability of the protein itself. Generally, the shelf life of liquid form is 6 months at -20 centigrade/-80 centigrade. The shelf life of lyophilized form is 12 months at -20 centigrade/-80 centigrade.

**Concentration** A hardcopy of COA will be sent along with the products. Please refer to it for detailed information.

## GENE INFORMATION

**Gene Name** [RPSA ribosomal protein SA \[ Homo sapiens \(human\) \]](#)

**Official Symbol** [RPSA](#)

**Synonyms** RPSA; SA; LBP; LRP; p40; 67LR; ICAS; lamR; 37LRP; LAMBR; LAMR1; LRP/LR; LBP/p40; NEM/1CHD4;

**Gene ID** [3921](#)

**mRNA Refseq** [NM\\_001304288](#)

**Protein Refseq** [NP\\_001291217](#)

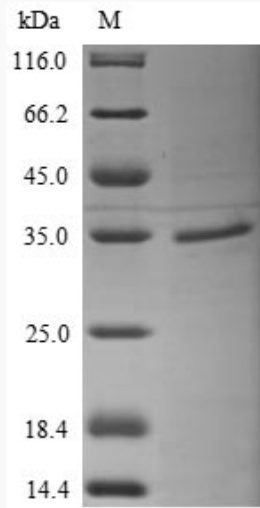
 Tel: 1-631-559-9269 1-516-512-3133

 Email: [info@creative-biomart.com](mailto:info@creative-biomart.com)  Fax: 1-631-938-8127

 45-1 Ramsey Road, Shirley, NY 11967, USA

UniProt ID

P08865



(Tris-Glycine gel) Discontinuous SDS-PAGE (reduced) with 5% enrichment gel and 15% separation gel.

Tel: 1-631-559-9269 1-516-512-3133

Email: [info@creative-biomart.com](mailto:info@creative-biomart.com) Fax: 1-631-938-8127

45-1 Ramsey Road, Shirley, NY 11967, USA