

## Recombinant Pig RPSA Protein, His-tagged

Cat. No. RPSA-2728P Lot. No. (See product label)

### SPECIFICATION

<b>Product Overview</b>	Recombinant Pig RPSA Protein (Met1-Ser295) with N-His tag was expressed in E. coli.
<b>Species</b>	Pig
<b>Source</b>	E.coli
<b>ProteinLength</b>	Met1-Ser295
<b>Description</b>	Required for the assembly and/or stability of the 40S ribosomal subunit. Required for the processing of the 20S rRNA-precursor to mature 18S rRNA in a late step of the maturation of 40S ribosomal subunits. Also functions as a cell surface receptor for laminin. Plays a role in cell adhesion to the basement membrane and in the consequent activation of signaling transduction pathways. May play a role in cell fate determination and tissue morphogenesis. Also acts as a receptor for several other ligands, including the pathogenic prion protein, viruses, and bacteria. Acts as a PPP1R16B-dependent substrate of PPP1CA.
<b>Form</b>	Freeze-dried powder
<b>Purity</b>	> 90%
<b>Applications</b>	Positive Control; Immunogen; SDS-PAGE; WB.
<b>Stability</b>	The thermal stability is described by the loss rate. The loss rate was determined by

 Tel: 1-631-559-9269 1-516-512-3133

 Email: [info@creative-biomart.com](mailto:info@creative-biomart.com)  Fax: 1-631-938-8127

 45-1 Ramsey Road, Shirley, NY 11967, USA

accelerated thermal degradation test, that is, incubate the protein at 37 centigrade for 48h, and no obvious degradation and precipitation were observed. The loss rate is less than 5% within the expiration date under appropriate storage condition.

**Storage**

Avoid repeated freeze/thaw cycles. Store at 2-8 centigrade for one month. Aliquot and store at -80 centigrade for 12 months.

**Storage Buffer**

PBS, pH7.4, containing 0.01% SKL, 1mM DTT, 5% Trehalose and Proclin300.

**Reconstitution**

Reconstitute in 20mM Tris, 150mM NaCl (pH8.0) to a concentration of 0.1-1.0 mg/mL. Do not vortex.

## GENE INFORMATION

**Gene Name**

RPSA ribosomal protein SA [ *Sus scrofa* (pig) ]

**Official Symbol**

RPSA

**Synonyms**

RPSA; ribosomal protein SA; LAMR1; 40S ribosomal protein SA; 37 kDa laminin receptor; 37/67 kDa laminin receptor; 37LRP; 67 kDa laminin receptor; 67LR; LBP/p40; LRP/LR; lamR; laminin receptor 1; laminin-binding protein precursor p40

**Gene ID**

641351

**mRNA Refseq**

NM\_001037146

**Protein Refseq**

NP\_001032223

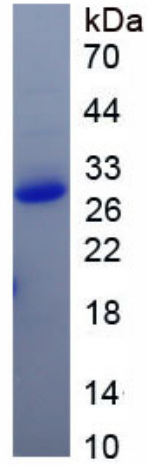
**UniProt ID**

Q4GWZ2

 Tel: 1-631-559-9269 1-516-512-3133

 Email: [info@creative-biomart.com](mailto:info@creative-biomart.com)  Fax: 1-631-938-8127

 45-1 Ramsey Road, Shirley, NY 11967, USA



Tel: 1-631-559-9269 1-516-512-3133

Email: [info@creative-biomart.com](mailto:info@creative-biomart.com) Fax: 1-631-938-8127

45-1 Ramsey Road, Shirley, NY 11967, USA