

## Recombinant Human RPSA Protein, MYC/DDK-tagged, C13 and N15-labeled

Cat. No. RPSA-312H Lot. No. (See product label)

### SPECIFICATION

#### Product Overview

RPSA MS Standard C13 and N15-labeled recombinant protein (NP\_001012321) with a C-terminal MYC/DDK tag, was expressed in HEK293 cells.

#### Species

Human

#### Source

HEK293

#### Description

Laminins, a family of extracellular matrix glycoproteins, are the major noncollagenous constituent of basement membranes. They have been implicated in a wide variety of biological processes including cell adhesion, differentiation, migration, signaling, neurite outgrowth and metastasis. Many of the effects of laminin are mediated through interactions with cell surface receptors. These receptors include members of the integrin family, as well as non-integrin laminin-binding proteins. This gene encodes a high-affinity, non-integrin family, laminin receptor 1. This receptor has been variously called 67 kD laminin receptor, 37 kD laminin receptor precursor (37LRP) and p40 ribosome-associated protein. The amino acid sequence of laminin receptor 1 is highly conserved through evolution, suggesting a key biological function. It has been observed that the level of the laminin receptor transcript is higher in colon carcinoma tissue and lung cancer cell line than their normal counterparts. Also, there is a correlation between the upregulation of this polypeptide in cancer cells and their invasive and metastatic phenotype. Multiple copies of this gene exist, however, most of them are pseudogenes thought to have arisen from retropositional events. Two alternatively spliced transcript variants encoding the same protein have been found

 Tel: 1-631-559-9269 1-516-512-3133

 Email: [info@creative-biomart.com](mailto:info@creative-biomart.com)  Fax: 1-631-938-8127

 45-1 Ramsey Road, Shirley, NY 11967, USA

for this gene. [provided by RefSeq, Jul 2008]

**Molecular Mass**

32.8 kDa

**AA Sequence**

MSGALDVLQMKEEDVLKFLAAGTHLGGTNLDFQMEQYIYKRKSDGIYIINLKRTWEK  
 LLLAARAIVAIENPADVSVISSRNTGQRAVLKFAAATGATPIAGRFTPGTFTNQIQAAF  
 REPRLLVVTDPRAHDQPLTEASYVNLPTIALCNTDSPLRYVDIAIPCNNKGAHSVGLM  
 WWMLAREVLRMRGTISREHPWEVMPDLYFYRDPEEIEKEGQAAA EKAVTKEEFQG  
 EWTAPAPEFTATQPEVADWSEGVQVPSVPIQQFPTEDWSAQPATEDWSAAPTAQA  
 TEWVGATTDWSTRTRPLEQKLISEEDLAANDILDYKDDDDKV

**Purity**

> 80% as determined by SDS-PAGE and Coomassie blue staining

**Stability**

Stable for 3 months from receipt of products under proper storage and handling conditions.

**Storage**

Store at -80 centigrade. Avoid repeated freeze-thaw cycles.

**Concentration**

50 µg/mL as determined by BCA

**Storage Buffer**

100 mM glycine, 25 mM Tris-HCl, pH 7.3.

## GENE INFORMATION

**Gene Name**

RPSA ribosomal protein SA [ Homo sapiens (human) ]

**Official Symbol**

RPSA

**Synonyms**

RPSA; ribosomal protein SA; SA; LBP; LRP; p40; 67LR; ICAS; lamR; 37LRP;  
 LAMBR; LAMR1; LRP/LR; LBP/p40; NEM/1CHD4; 40S ribosomal protein SA; 37 kDa  
 laminin receptor; 37/67 kDa laminin receptor; 67 kDa laminin receptor; colon

 Tel: 1-631-559-9269 1-516-512-3133

 Email: [info@creative-biomart.com](mailto:info@creative-biomart.com)  Fax: 1-631-938-8127

 45-1 Ramsey Road, Shirley, NY 11967, USA

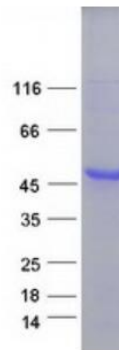
carcinoma laminin-binding protein; laminin receptor 1 (67kD, ribosomal protein SA); laminin-binding protein precursor p40; multidrug resistance-associated protein MGr1-Ag; small ribosomal subunit protein uS2


**Gene ID** 3921

**MIM** 150370


**UniProt ID** P08865

**SDS-PAGE**



 Tel: 1-631-559-9269 1-516-512-3133

 Email: [info@creative-biomart.com](mailto:info@creative-biomart.com)  Fax: 1-631-938-8127

 45-1 Ramsey Road, Shirley, NY 11967, USA