

Recombinant Human RPSA Protein, Myc/DDK-tagged, C13 and N15-labeled

Cat. No. RPSA-3512H **Lot. No.** (See product label)

SPECIFICATION

Product Overview	RPSA MS Standard C13 and N15-labeled recombinant protein (NP_002286) with a C-terminal MYC/DDK tag, was expressed in HEK293 cells.
Species	Human
Source	HEK293
Description	<p>Laminins, a family of extracellular matrix glycoproteins, are the major noncollagenous constituent of basement membranes. They have been implicated in a wide variety of biological processes including cell adhesion, differentiation, migration, signaling, neurite outgrowth and metastasis. Many of the effects of laminin are mediated through interactions with cell surface receptors. These receptors include members of the integrin family, as well as non-integrin laminin-binding proteins. This gene encodes a high-affinity, non-integrin family, laminin receptor 1. This receptor has been variously called 67 kD laminin receptor, 37 kD laminin receptor precursor (37LRP) and p40 ribosome-associated protein. The amino acid sequence of laminin receptor 1 is highly conserved through evolution, suggesting a key biological function. It has been observed that the level of the laminin receptor transcript is higher in colon carcinoma tissue and lung cancer cell line than their normal counterparts. Also, there is a correlation between the upregulation of this polypeptide in cancer cells and their invasive and metastatic phenotype. Multiple copies of this gene exist, however, most of them are pseudogenes thought to have arisen from retropositional events. Two alternatively spliced transcript variants encoding the same protein have been found</p>

 Tel: 1-631-559-9269 1-516-512-3133

 Email: info@creative-biomart.com  Fax: 1-631-938-8127

 45-1 Ramsey Road, Shirley, NY 11967, USA

	for this gene.
Molecular Mass	32.8 kDa
AA Sequence	MSGALDVLQMKEEDVLKFLAAGTHLGGTNLDFQMEQYIYKRKSDGIYIINLKRTWEK LLLAARAIVAIENPADVSVISSRNTGQRAVLKFAAATGATPIAGRFTPGTFTNQIQAAF REPRLLVVTDPRAHDQPLTEASYVNLPTIALCNTDSPLRYVDIAIPCNNKGAHSVGLM WWMLAREVLRMRGTISREHPWEVMPDLYFYRDPEEIEKEGQAAAEKAVTKEEFQG EWTAPAPEFTATQPEVADWSEGVQVPSVPIQQFPTEDWSAQPATEDWSAAPTAAQA TEWVGATTDWSTRTRPLEQKLISEEDLAANDILDYKDDDDKV
Purity	> 80% as determined by SDS-PAGE and Coomassie blue staining
Stability	Stable for 3 months from receipt of products under proper storage and handling conditions.
Storage	Store at -80 centigrade. Avoid repeated freeze-thaw cycles.
Concentration	50 µg/mL as determined by BCA
Storage Buffer	100 mM glycine, 25 mM Tris-HCl, pH 7.3.

GENE INFORMATION

Gene Name	RPSA ribosomal protein SA [Homo sapiens (human)]
Official Symbol	RPSA
Synonyms	RPSA; ribosomal protein SA; SA; LBP; LRP; p40; 67LR; ICAS; lamR; 37LRP; LAMBR; LAMR1; LRP/LR; LBP/p40; NEM/1CHD4; 40S ribosomal protein SA; 37 kDa laminin receptor; 37/67 kDa laminin receptor; 67 kDa laminin receptor; colon

 Tel: 1-631-559-9269 1-516-512-3133

 Email: info@creative-biomart.com  Fax: 1-631-938-8127

 45-1 Ramsey Road, Shirley, NY 11967, USA

carcinoma laminin-binding protein; laminin receptor 1 (67kD, ribosomal protein SA); laminin-binding protein precursor p40; multidrug resistance-associated protein MGr1-Ag; small ribosomal subunit protein uS2

Gene ID 3921

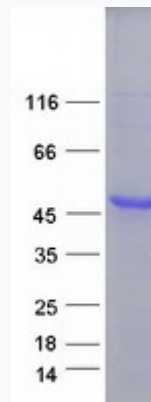
mRNA Refseq NM_002295

Protein Refseq NP_002286

MIM 150370

UniProt ID P08865

SDS-PAGE



 Tel: 1-631-559-9269 1-516-512-3133

 Email: info@creative-biomart.com  Fax: 1-631-938-8127

 45-1 Ramsey Road, Shirley, NY 11967, USA