

# Recombinant Human RPUSD1 Protein, Myc/DDK-tagged, C13 and N15-labeled

**Cat. No.** RPUSD1-4863H    **Lot. No.** (See product label)

## SPECIFICATION

<b>Product Overview</b>	RPUSD1 MS Standard C13 and N15-labeled recombinant protein (NP_478072) with a C-terminal MYC/DDK tag, was expressed in HEK293 cells.
<b>Species</b>	Human
<b>Source</b>	HEK293
<b>Description</b>	RPUSD1 (RNA Pseudouridine Synthase Domain Containing 1) is a Protein Coding gene. Gene Ontology (GO) annotations related to this gene include RNA binding and pseudouridine synthase activity. An important paralog of this gene is RPUSD4.
<b>Molecular Mass</b>	34.8 kDa
<b>AA Sequence</b>	MEPGSVENLSIVYRSRDFLVVNKHWDVRIDSKAWRETLTLQKQLRYRFPELADPDT CYGFRFCHQLDFSTSGALCVALNKAAGSAYRCFKERRVTKAYLALLRGHIQESRVT ISHAIGRNSTEGRAHTMCIEGSQGCENPKPSLTDLVVLEHGLYAGDPVSKVLLKPLT GRTHQLRVHCSALGHPVVGDLTYGEVSGREDRPFMMMLHAFYLRIPTDTECVVCT PDPFLPSLDACWSPHTLLQSLDQLVQALRATPDPDPEDRGPRPGSPSALLPGPGRP PPPPTKPPETEAQRGPCLQWLSEWTLEPDSTRTRPLEQKLISEEDLAANDILDYKDD DDKV
<b>Purity</b>	> 80% as determined by SDS-PAGE and Coomassie blue staining
<b>Stability</b>	Stable for 3 months from receipt of products under proper storage and handling

 Tel: 1-631-559-9269    1-516-512-3133

 Email: [info@creative-biomart.com](mailto:info@creative-biomart.com)     Fax: 1-631-938-8127

 45-1 Ramsey Road, Shirley, NY 11967, USA

conditions.

**Storage** Store at -80 centigrade. Avoid repeated freeze-thaw cycles.

**Concentration** 50 µg/mL as determined by BCA

**Storage Buffer** 100 mM glycine, 25 mM Tris-HCl, pH 7.3.

## GENE INFORMATION

**Gene Name** [RPUSD1 RNA pseudouridylate synthase domain containing 1 \[ Homo sapiens \(human\) \]](#)

**Official Symbol** [RPUSD1](#)

**Synonyms** RPUSD1; RNA pseudouridylate synthase domain containing 1; C16orf40, chromosome 16 open reading frame 40; RNA pseudouridylate synthase domain-containing protein 1; MGC19600; RLUCL; ribosomal large subunit pseudouridine synthase C like; ribosomal large subunit pseudouridine synthase C-like protein; C16orf40;

**Gene ID** [113000](#)

**mRNA Refseq** [NM\\_058192](#)

**Protein Refseq** [NP\\_478072](#)

**UniProt ID** [Q9UJJ7](#)

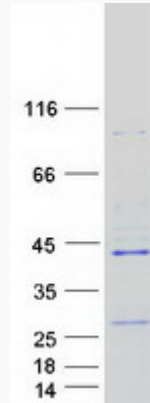
 Tel: 1-631-559-9269 1-516-512-3133

 Email: [info@creative-biomart.com](mailto:info@creative-biomart.com)  Fax: 1-631-938-8127

 45-1 Ramsey Road, Shirley, NY 11967, USA



SDS-PAGE



Tel: 1-631-559-9269 1-516-512-3133

Email: [info@creative-biomart.com](mailto:info@creative-biomart.com) Fax: 1-631-938-8127

45-1 Ramsey Road, Shirley, NY 11967, USA