

# Recombinant Human RRAS2 Protein, Myc/DDK-tagged, C13 and N15-labeled

Cat. No. RRAS2-4415H Lot. No. (See product label)

## SPECIFICATION

### Product Overview

RRAS2 MS Standard C13 and N15-labeled recombinant protein (NP\_036382) with a C-terminal MYC/DDK tag, was expressed in HEK293 cells.

### Species

Human

### Source

HEK293

### Description

This gene encodes a member of the R-Ras subfamily of Ras-like small GTPases. The encoded protein associates with the plasma membrane and may function as a signal transducer. This protein may play an important role in activating signal transduction pathways that control cell proliferation. Mutations in this gene are associated with the growth of certain tumors. Pseudogenes of this gene are found on chromosomes 1 and 2. Alternate splicing results in multiple transcript variants.

### Molecular Mass

23.4 kDa

### AA Sequence

MAAAGWRDGSQGEKYRLVVVGGGGVGSALTIQFIQSDFVTDYDPTIEDSYTKQCV  
 IDDRAARLDILDTAGQEEFGAMREQYMRTGEGFLLVFSVTDGRGSFEEIYKFQRQILR  
 VKDRDEFPMILIGNKADLDHQRQVTQEEGQQLARQLKVTYMEASAKIRMNVDQAFH  
 ELVRVIRKFQEQECPSPPEPTRKEKDKKGGCHCVIFSGPTRTRPLEQKLISEEDLAAN  
 DILDYKDDDDKV

### Purity

> 80% as determined by SDS-PAGE and Coomassie blue staining

 Tel: 1-631-559-9269 1-516-512-3133

 Email: [info@creative-biomart.com](mailto:info@creative-biomart.com)  Fax: 1-631-938-8127

 45-1 Ramsey Road, Shirley, NY 11967, USA

<b>Stability</b>	Stable for 3 months from receipt of products under proper storage and handling conditions.
<b>Storage</b>	Store at -80 centigrade. Avoid repeated freeze-thaw cycles.
<b>Concentration</b>	50 µg/mL as determined by BCA
<b>Storage Buffer</b>	100 mM glycine, 25 mM Tris-HCl, pH 7.3.

## GENE INFORMATION

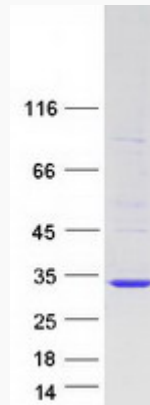
<b>Gene Name</b>	RRAS2 RAS related 2 [ Homo sapiens (human) ]
<b>Official Symbol</b>	RRAS2
<b>Synonyms</b>	RRAS2; related RAS viral (r-ras) oncogene homolog 2; ras-related protein R-Ras2; TC21; ras-like protein TC21; teratocarcinoma oncogene;
<b>Gene ID</b>	22800
<b>mRNA Refseq</b>	NM_012250
<b>Protein Refseq</b>	NP_036382
<b>MIM</b>	600098
<b>UniProt ID</b>	P62070

 Tel: 1-631-559-9269 1-516-512-3133

 Email: [info@creative-biomart.com](mailto:info@creative-biomart.com)  Fax: 1-631-938-8127

 45-1 Ramsey Road, Shirley, NY 11967, USA

**SDS-PAGE**



 Tel: 1-631-559-9269 1-516-512-3133

 Email: [info@creative-biomart.com](mailto:info@creative-biomart.com)  Fax: 1-631-938-8127

 45-1 Ramsey Road, Shirley, NY 11967, USA